

**PERSONS NOT IN THE
LABOUR FORCE**

AUSTRALIA

EMBARGO: 11.30AM (CANBERRA TIME) THURS 7 MAR 2013

C O N T E N T S

	<i>page</i>
Notes	2
Conceptual framework	3
Summary of findings	4

T A B L E S

List of tables	9
Civilian population aged 15 years and over	10
Persons not in the labour force aged 15 years and over	11
Persons not in the labour force, with marginal attachment to the labour force not actively looking for work	17
Persons not in the labour force, discouraged job seekers	19
Persons not in the labour force, without marginal attachment	20
Persons not in the labour force because they were caring for children, who wanted to work but not actively looking for work	23
Persons not in the labour force, last job less than 20 years ago	24
Populations	27

A D D I T I O N A L I N F O R M A T I O N

Explanatory Notes	30
Appendix 1: Populations and data items list	35
Appendix 2: Supplementary surveys	42
Technical note	43
Glossary	46

I N Q U I R I E S

For further information about these and related statistics, contact the National Information and Referral Service on 1300 135 070 or Labour Supplementary Surveys Section on Canberra (02) 6252 7206, <labour.statistics@abs.gov.au>.

NOTES

ABOUT THIS PUBLICATION

This publication presents information about people aged 15 years and over who are not in the labour force: that is, neither employed nor unemployed. The data measure the potential supply of labour, not reflected in employment and unemployment statistics, and measure the characteristics of that potential supply.

Statistics in this publication were obtained from the Persons Not in the Labour Force Survey, conducted throughout Australia in September 2012 as a supplement to the Australian Bureau of Statistics (ABS) monthly Labour Force Survey (LFS).

Information collected in the survey includes details about whether people not in the labour force wanted to work; reasons why they were not actively looking for work, or were not available for work; and their main activity while not in the labour force.

Many people not in the labour force have some attachment to the labour force. For example, they may want a job, but for a variety of reasons are not actively looking for work even though they are available to start a job. There is an expectation that many of these people could move into the labour force in the short term, or could do so if labour market conditions changed.

ADDITIONAL DATACUBES

Datacubes presenting more detailed data including historical time series will be published on 19 March 2013 under this catalogue number. These will be available free of charge from the ABS website.

ROUNDING

As estimates have been rounded, discrepancies may occur between sums of the component items and totals.



ABBREVIATIONS

'000	thousand
ABS	Australian Bureau of Statistics
ANZSCO	Australian and New Zealand Standard Classification of Occupations
cat. no.	Catalogue number
ILO	International Labour Organization
LFS	Labour Force Survey
RSE	relative standard error
SACC	Standard Australian Classification of Countries
SE	standard error

Brian Pink
Australian Statistician

CONCEPTUAL FRAMEWORK

**PERSONS NOT IN THE
LABOUR FORCE (PNILF)
AGED 15 YEARS AND
OVER**

Persons not in the labour force consists of those who are marginally attached to the labour force, and those who are not. Persons who are marginally attached to the labour force satisfy some, but not all, of the criteria used to classify a person as unemployed.

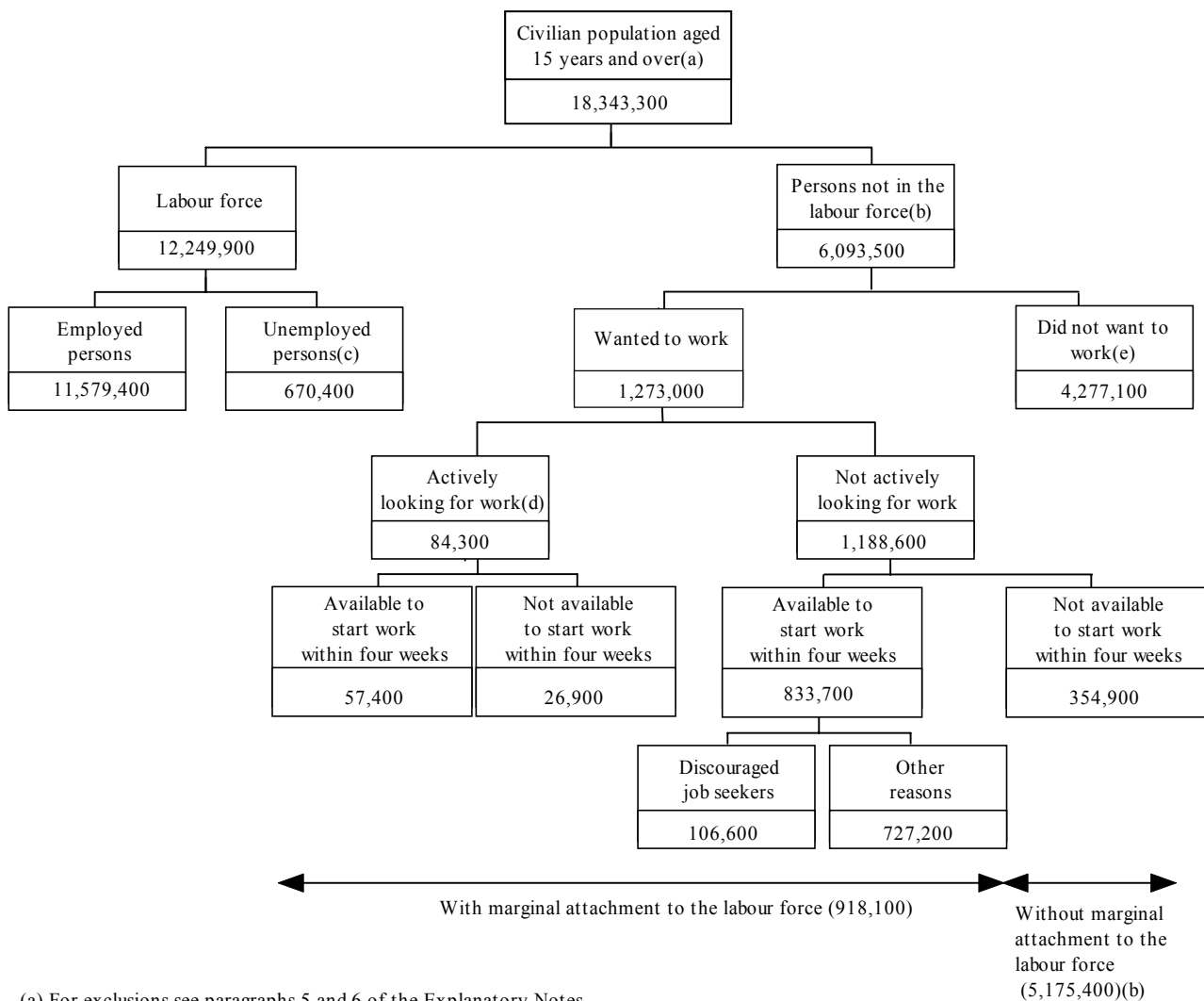
Persons not in the labour force are considered to be marginally attached to the labour force if they:

- wanted to work and were actively looking for work (but, unlike unemployed people, were not available to start work in the reference week); or
- wanted to work and were not actively looking for work but were available to start work within four weeks.

Persons not in the labour force are not marginally attached to the labour force if they:

- did not want to work; or
- wanted to work but were not actively looking for work and were not available to start work within four weeks.

The following diagram presents estimates from the September 2012 PNILF Survey.



(a) For exclusions see paragraphs 5 and 6 of the Explanatory Notes

(b) Includes 543,400 people who were permanently unable to work.

(c) Includes future starters.

(d) Refers to people who were actively looking for work, but were not available to start work in the reference week.

(e) Includes people who 'Did not know'.

SUMMARY OF FINDINGS

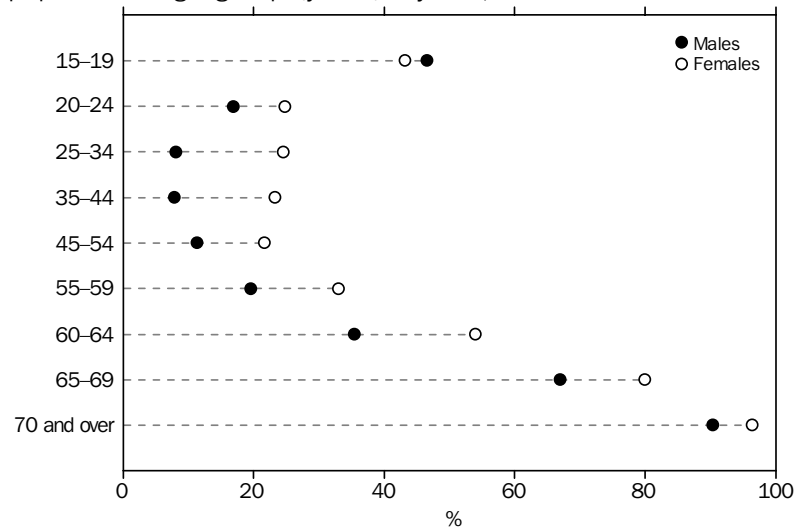
OVERVIEW

In September 2012, the Persons Not in the Labour Force survey found there were just over 6 million people aged 15 years and over who were not in the labour force. This represented 33% of the civilian population aged 15 years and over, and has remained stable over recent years (Table 1).

Of those people not in the labour force:

- 60% were women;
- 21% wanted to work (22% of women not in the labour force and 19% of men not in the labour force) (Table 1); and
- 16% were aged 15–24 years, 41% were aged 25–64 years and 43% were aged 65 years and over (Table 2).

PERSONS NOT IN THE LABOUR FORCE, Proportion of the civilian population—Age group (years)—By sex, 2012



The proportion of persons not in the labour force was highest in the age groups most likely to be retired (73% for those aged 65–69 years and 94% for those 70 years and over) and those in the age group coinciding with school study (45% for those aged 15–19 years) (Table 3).

Apart from the 15–19 year age group, there were a higher proportion of women who were not in the labour force than men (Table 3).

The main activity reported for those not in the labour force varied by age. The main activity for those aged 15–24 years was attending an educational institution (83%), while for those 65 years and over, it was retired or voluntarily inactive (53% for 65–69 years and 61% for those 70 years and over) (Table 2).

Across the other age groups (25 to 64 years), the most common main activity for males was own long term health condition or disability (35%). For women the most common main activity was home duties (39%) (Table 2).

SUMMARY OF FINDINGS *continued*

WITH MARGINAL ATTACHMENT TO THE LABOUR FORCE

In September 2012, there were 918,100 people with marginal attachment to the labour force, representing approximately 15% of people not in the labour force.

Persons not in the labour force are considered to be marginally attached to the labour force if they:

- wanted to work and were actively looking for work but were not available to start work in the reference week (84,300); or
- wanted to work and were not actively looking for work but were available to start work within four weeks (833,700).

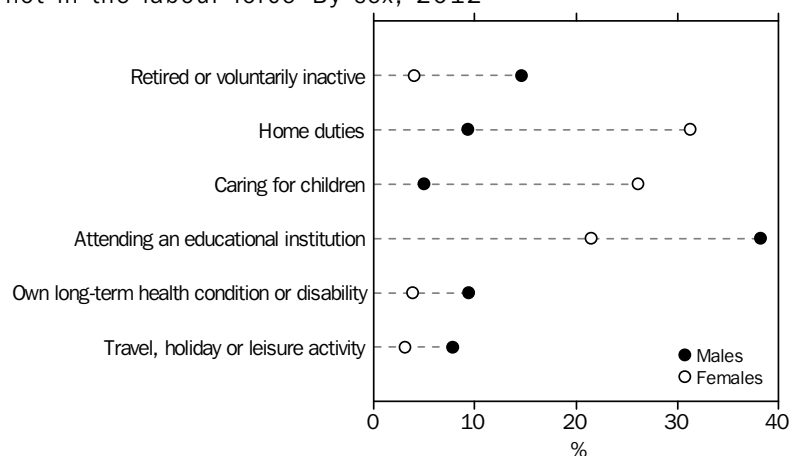
Of those with marginal attachment to the labour force:

- 569,300 (62%) were women;
- 833,700 (91%) were not actively looking for work, but were available to start work within four weeks (Table 1);
- 268,400 (29%) were aged 15–24 years (Table 3); and
- 196,100 (21%) had never held a job (Table 4).

The largest group of men with marginal attachment to the labour force were aged 15–19 years (30%), followed by men aged 25–34 years (13%). By comparison, the two largest groups of women with marginal attachment to the labour force were aged 35–44 years (23%) and 25–34 years (23%) (Table 3).

Main activity when not in the labour force

PERSONS WITH MARGINAL ATTACHMENT, Selected main activity when not in the labour force—By sex, 2012



The most commonly reported main activity for men with marginal attachment to the labour force was 'Attending an educational institution' (38% of men compared to 22% of women), whereas for women it was 'Home duties' (31% of women compared to 9% of men) and 'Caring for children' (26% of women compared to 5% of men) (Table 4).

Wanted to work but not actively looking

There were 259,200 people not in the labour force because they were caring for children who wanted to work but were not actively looking for work. The majority (94%) were women (Table 9).

Time since last job

In September 2012, 79% (722,000) of people with marginal attachment to the labour force had worked before. Of these people about a third (32%) had worked less than 12 months ago, and a further 23% had worked one to three years ago (Table 4).

SUMMARY OF FINDINGS *continued*

Not actively looking for work - Intention to enter the labour force in the next 12 months

There were 833,700 people who were marginally attached to the labour force and not actively looking for work and available to start work within four weeks. Of these people 578,800 (69%) indicated that they intended to, or might enter the labour force in the next 12 months. Of whom:

- 358,200 (62%) were women;
- 54,300 (9%) were discouraged job seekers; and
- 385,000 (67%) reported that they would prefer to work part-time (Table 5).

Of women with marginal attachment to the labour force who were not actively looking for work, who intended to or might enter the workforce in the next 12 months, 263,700 (74%) preferred part-time work, while 72,400 (20%) preferred full-time work. For men, 121,300 (55%) preferred part-time work and 82,700 (37%) preferred full-time work. The remaining people did not know if they wanted to work full-time or part-time.

The most common reasons for those who might enter the labour force in the next 12 months for not actively looking for work was that they were currently attending an education institution (27%) or they were caring for children (18%)

Of those with marginal attachment who were not actively looking for work, 26% reported that they were not intending to work (Table 5).

Discouraged Job Seekers

In September 2012, there were 106,600 discouraged job seekers aged 15 years and over. This was a statistically significant increase from 90,700 in 2011, and is a return to a similar level in 2010 (102,100) and 2009 (111,800). The increase in 2012 was due to a rise in male discouraged job seekers (from 38,300 in 2011 to 50,200 in 2012) (Table 1).

Discouraged job seekers are those people with marginal attachment to the labour force who wanted to work and were available to start work within the next four weeks but whose main reason for not actively looking for work was that they believed they would not find a job for any of the following reasons:

- considered to be too young or too old by employers;
- believes ill health or disability discourages employers;
- lacked necessary schooling, training, skills or experience;
- difficulties because of language or ethnic background;
- no jobs in their locality or line of work,
- no jobs with suitable hours; or
- no jobs at all.

Of the 106,600 discouraged job seekers:

- 64,300 (60%) were aged 55 years and over;
- 56,300 (53%) were women;
- 92,900 (87%) had worked before (Table 7);
- 54,300 (51%) intended to or might enter the labour force in the next 12 months (Table 7), of whom 63% preferred to work part-time (Table 5);
- 28,400 were not currently looking for work but had looked for work in the previous 12 months (Table 7).
- 48,000 (45%) did not intend to enter the labour force in the next 12 months, of whom 63% stated the main reason they were not actively looking for work was because they were 'Considered too old by employers' (Table 5).

SUMMARY OF FINDINGS *continued*

*Discouraged Job Seekers
continued*

DISCOURAGED JOB SEEKERS, Selected main reason for not actively looking for work—By sex, 2012



For all discouraged job seekers, the most commonly reported main reason for not actively looking for work was 'Considered too old by employers' (36%). This was followed by 'No jobs in locality or line of work' (20%) (Table 5).

*Main reason for not
actively looking for work -
those who were not
discouraged job seekers*

There were 727,200 people who were not discouraged job seekers, who wanted to work, but were not actively looking for work and were available to start work within four weeks. These people accounted for 79% of all people with marginal attachment to the labour force (Table 4).

PERSONS WHO WERE NOT DISCOURAGED JOB SEEKERS, marginally ATTACHED TO THE LABOUR FORCE, NOT ACTIVELY LOOKING FOR WORK AND AVAILABLE, Selected main reason for not actively looking for work—By sex, 2012



Of the 727,200 people who were not discouraged job seekers, the most commonly reported main reason for not actively looking for work, by men, was 'Attending an educational institution' (35%), followed by 'Own long-term health condition or disability' (15%). By comparison, the most commonly reported main reason for women was 'Caring for children' (31%), followed by 'Attending an educational institution' (19%) (Table 6).

SUMMARY OF FINDINGS *continued*

WITHOUT MARGINAL ATTACHMENT TO THE LABOUR FORCE

In September 2012, there were 5.2 million people (2.1 million men and 3.1 million women) aged 15 years and over without marginal attachment to the labour force. Of those without marginal attachment:

- 83% reported that they did not want to work, or did not know if they wanted to work;
- 7% wanted to work but were not actively looking for work and were not available to start work within four weeks (Table 1);
- 10% were permanently unable to work;
- 49% were aged 65 years and over (53% of men and 46% of women);
- 16% were aged 55–64 years old; and
- 18% never had a job, of whom 60% were women (Table 8).

Main activity when not in the labour force

For those without marginal attachment to the labour force, the most commonly reported main activity when not in the labour force was 'Retired or voluntarily inactive' (34%) followed by 'Home duties' (20%) (Table 8).

Time since last job

In September 2012, there were 4.3 million people without marginal attachment to the labour force who had previously had a job. Of these:

- 55% last worked 10 or more years ago; and
- 20% last worked less than 3 years ago (Table 8).

LIST OF TABLES

page

CIVILIAN POPULATION AGED 15 YEARS AND OVER

- 1** Labour force status and persons not in the labour force summary variable, by sex, September 2009 to September 2012 10

PERSONS NOT IN THE LABOUR FORCE AGED 15 YEARS AND OVER

- 2** Main activity when not in the labour force, by age group (years), by sex 11
- 3** State or territory of usual residence, age group (years), relationship in household and country of birth, by wanted to work, not actively looking, but were available and proportion not in the labour force, by sex and by marginal attachment 12
- 4** Time since last job and main activity when not in the labour force, by wanted to work, not actively looking, but were available, by sex and by marginal attachment 15

WITH MARGINAL ATTACHMENT TO THE LABOUR FORCE NOT ACTIVELY LOOKING FOR WORK

- 5** Sex and main reason for not actively looking for work, by intention to enter the labour force in the next 12 months and full-time or part-time preference 17
- 6** Main reason for not actively looking for work by age group (years) and sex 18

DISCOURAGED JOB SEEKERS

- 7** Age group (years), whether looked for work in the last 12 months, intention to enter the labour force in the next 12 months and time since last job, by sex 19

WITHOUT MARGINAL ATTACHMENT TO THE LABOUR FORCE

- 8** State or territory of usual residence, age group (years), relationship in household, country of birth, time since last job and main activity when not in the labour force, by whether wanted to work, by sex and by without marginal attachment 20

BECAUSE THEY WERE CARING FOR CHILDREN WHO WANTED TO WORK BUT NOT ACTIVELY LOOKING

- 9** Sex, age group (years), age of youngest child, relationship in household and country of birth, by whether available for work 23

LAST JOB LESS THAN 20 YEARS AGO

- 10** Reason for ceasing last job, occupation of last job, whether looked for work in the last 12 months and time since last job, by status in employment in last job and full-time or part-time status in last job, by sex 24

POPULATIONS

- 11** State or territory of usual residence, by sex 27

CIVILIAN POPULATION AGED 15 YEARS AND OVER, Labour force status and persons not in the labour force summary variable—By sex—September 2009 to September 2012

	2009	2010	2011	2012
	'000	'000	'000	'000
MALES				
Civilian population aged 15 years and over	8 523.8	8 865.5	8 967.6	9 075.5
Persons in the labour force	6 275.3	6 546.7	6 581.6	6 628.7
Employed	5 915.5	6 220.9	6 242.3	6 251.8
Unemployed	359.8	325.8	339.3	376.9
Persons not in the labour force	2 248.5	2 318.8	2 386.0	2 447.0
With marginal attachment to the labour force	327.6	349.4	351.4	348.8
Wanted to work and were actively looking for work	34.8	32.9	36.7	37.8
Were available to start work within four weeks	24.4	23.1	23.2	26.9
Were not available to start work within four weeks	10.4	9.9	13.5	10.8
Wanted to work but were not actively looking for work and were available to start work within four weeks	292.8	316.5	314.7	311.0
Discouraged job seekers	52.3	39.9	38.3	50.2
Other	240.5	276.6	276.4	260.8
Without marginal attachment to the labour force(a)	1 920.9	1 969.3	2 034.6	2 098.2
Wanted to work but were not actively looking for work and were not available to start work within four weeks	107.3	126.6	126.7	120.9
Did not want to work(b)	1 604.4	1 637.5	1 677.1	1 698.7
FEMALES				
Civilian population aged 15 years and over	8 678.5	9 022.2	9 152.2	9 267.6
Persons in the labour force	5 246.7	5 460.3	5 565.7	5 621.1
Employed	4 956.6	5 176.9	5 272.4	5 327.6
Unemployed	290.1	283.4	293.3	293.5
Persons not in the labour force	3 431.7	3 561.9	3 586.4	3 646.5
With marginal attachment to the labour force	565.5	576.4	587.1	569.3
Wanted to work and were actively looking for work	34.9	41.9	48.4	46.5
Were available to start work within four weeks	25.5	30.2	36.9	30.5
Were not available to start work within four weeks	9.4	11.8	11.4	16.1
Wanted to work but were not actively looking for work and were available to start work within four weeks	530.6	534.5	538.7	522.7
Discouraged job seekers	59.5	62.3	52.4	56.3
Other	471.1	472.3	486.3	466.4
Without marginal attachment to the labour force(a)	2 866.3	2 985.5	2 999.3	3 077.2
Wanted to work but were not actively looking for work and were not available to start work within four weeks	256.4	239.9	236.6	233.9
Did not want to work(b)	2 434.0	2 562.0	2 564.4	2 578.4
PERSONS				
Civilian population aged 15 years and over	17 202.3	17 887.7	18 119.7	18 343.3
Persons in the labour force	11 522.0	12 007.0	12 147.3	12 249.9
Employed	10 872.1	11 397.7	11 514.7	11 579.4
Unemployed	649.9	609.2	632.6	670.4
Persons not in the labour force	5 680.3	5 880.7	5 972.4	6 093.5
With marginal attachment to the labour force	893.1	925.9	938.4	918.1
Wanted to work and were actively looking for work	69.7	74.9	85.1	84.3
Were available to start work within four weeks	49.9	53.2	60.1	57.4
Were not available to start work within four weeks	19.8	21.7	25.0	26.9
Wanted to work but were not actively looking for work and were available to start work within four weeks	823.4	851.0	853.4	833.7
Discouraged job seekers	111.8	102.1	90.7	106.6
Other	711.6	748.9	762.7	727.2
Without marginal attachment to the labour force(a)	4 787.2	4 954.8	5 034.0	5 175.4
Wanted to work but were not actively looking for work and were not available to start work within four weeks	363.7	366.5	363.3	354.9
Did not want to work(b)	4 038.4	4 199.5	4 241.5	4 277.1

(a) Includes people who were 'Permanently unable to work'.

(b) Includes people who 'Did not know'.

PERSONS NOT IN THE LABOUR FORCE, Main activity when not in the labour force—By age groups (years)—By sex

Main activity when not in the labour force	AGE GROUP (YEARS)								Total
	15–24	25–34	35–44	45–54	55–59	60–64	65–69	70 and over	
	'000	'000	'000	'000	'000	'000	'000	'000	'000
MALES									
Retired or voluntarily inactive	*1.9	*2.8	*5.9	14.1	30.7	97.6	210.3	579.7	942.9
Home duties	*2.8	9.8	15.9	25.2	17.6	19.6	24.8	66.4	182.1
Caring for children	np	np	13.0	*6.2	**1.6	*2.9	*1.9	*3.1	39.3
Attending an educational institution	439.0	49.5	13.9	*4.0	*2.1	**0.7	np	np	511.1
Own long-term health condition or disability	19.0	37.7	48.8	79.5	54.7	55.7	34.3	72.2	401.9
Own short-term illness or injury	*4.3	*4.1	*6.0	9.3	*3.0	*4.8	*3.2	*2.9	37.7
Looking after ill or disabled person	*3.4	*4.0	7.5	14.8	9.8	8.1	10.5	18.0	76.2
Travel, holiday or leisure activity	8.4	7.5	*4.3	*5.4	*4.9	13.4	39.2	57.8	140.8
Working in unpaid voluntary job	*3.5	**1.5	*3.1	**1.3	*2.4	9.7	11.0	25.3	57.8
Other	np	np	*7.3	10.9	*6.0	*4.8	np	np	57.3
Total	492.4	136.0	125.7	170.8	132.8	217.2	339.8	832.3	2 447.0
FEMALES									
Retired or voluntarily inactive	*2.6	*2.5	**1.6	19.5	35.9	99.9	184.0	566.5	912.3
Home duties	32.6	124.6	157.5	157.9	98.1	122.2	120.1	274.3	1 087.3
Caring for children	np	np	135.6	20.5	*6.1	*7.1	12.6	7.8	426.7
Attending an educational institution	393.0	51.9	25.9	15.6	*4.7	*3.8	np	np	496.4
Own long-term health condition or disability	9.6	12.5	28.3	64.9	42.6	41.3	23.9	64.6	287.8
Own short-term illness or injury	*4.7	*6.1	*5.6	*7.1	*2.4	*5.9	*1.9	*3.5	37.3
Looking after ill or disabled person	*2.5	8.6	14.0	30.7	22.4	31.0	17.2	31.7	158.0
Travel, holiday or leisure activity	*4.1	*5.1	*3.1	*5.4	*6.9	15.5	32.0	52.9	125.0
Working in unpaid voluntary job	*1.8	**1.1	**1.6	*4.5	8.5	12.2	16.4	32.8	79.0
Other	np	np	*5.0	*6.1	*2.1	*3.8	np	np	36.5
Total	508.9	405.1	378.1	332.1	229.9	342.7	410.7	1 039.0	3 646.5
PERSONS									
Retired or voluntarily inactive	*4.4	*5.3	7.5	33.5	66.6	197.4	394.2	1 146.2	1 855.2
Home duties	35.4	134.4	173.4	183.1	115.7	141.8	144.9	340.8	1 269.4
Caring for children	50.3	197.3	148.6	26.7	7.7	10.0	14.5	10.9	466.0
Attending an educational institution	832.1	101.4	39.8	19.5	*6.8	*4.5	np	np	1 007.5
Own long-term health condition or disability	28.5	50.2	77.1	144.4	97.3	97.0	58.3	136.8	689.7
Own short-term illness or injury	9.0	10.2	11.6	16.4	*5.5	10.7	*5.1	*6.5	75.0
Looking after ill or disabled person	*5.9	12.6	21.6	45.5	32.2	39.1	27.7	49.7	234.3
Travel, holiday or leisure activity	12.5	12.6	*7.3	10.8	11.8	28.8	71.2	110.7	265.8
Working in unpaid voluntary job	*5.2	*2.6	*4.7	*5.9	10.9	21.9	27.5	58.1	136.8
Other	18.0	14.5	12.2	17.0	8.1	8.6	np	np	93.8
Total	1 001.3	541.1	503.9	502.8	362.6	560.0	750.5	1 871.4	6 093.5

* estimate has a relative standard error of 25% to 50% and should be used with caution

** estimate has a relative standard error greater than 50% and is considered too unreliable for general use

np not available for publication but included in totals where applicable, unless otherwise indicated

WANTED TO WORK, NOT
ACTIVELY LOOKING, BUT
WERE AVAILABLE

	Discouraged job seekers			Persons with marginal attachment to the labour force	Persons not in the labour force	Proportion not in the labour force (a)
	'000	'000	'000			

MALES

	Discouraged job seekers	Other	Total	Persons with marginal attachment to the labour force	Persons not in the labour force	Proportion not in the labour force (a)
	'000	'000	'000	'000	'000	%
State or territory of usual residence						
New South Wales	21.7	75.5	97.1	110.2	822.9	28.2
Victoria	13.1	70.5	83.6	92.6	615.4	27.2
Queensland	7.7	52.3	60.0	65.3	475.4	26.0
South Australia	*2.7	23.4	26.0	29.6	205.8	30.9
Western Australia	*2.2	23.2	25.4	31.3	213.7	21.9
Tasmania	2.1	8.4	10.4	10.7	65.8	32.7
Northern Territory	np	np	2.9	3.2	14.4	17.7
Australian Capital Territory	np	np	5.5	5.9	33.7	23.1
Age group (years)						
15–19	np	np	94.7	103.2	350.2	46.6
20–24	np	np	27.4	32.5	142.1	16.9
25–34	**0.9	34.0	34.9	43.6	136.0	8.1
35–44	*5.2	21.7	26.9	32.7	125.7	7.9
45–54	*4.3	23.1	27.4	31.1	170.8	11.3
55–59	*3.0	13.3	16.4	19.5	132.8	19.6
60–64	*4.0	17.1	21.2	23.1	217.2	35.4
65–69	11.1	20.8	31.9	32.9	339.8	66.9
70 and over	15.2	15.1	30.3	30.3	832.3	90.4
Relationship in household						
Family member	37.7	207.3	245.0	275.3	1 885.5	25.4
Husband, wife or partner	27.4	78.8	106.1	118.3	1 252.0	22.9
Lone parent	**1.0	*7.1	8.1	9.9	59.1	32.2
Dependent student	*5.9	84.1	90.0	97.1	354.6	56.5
Non-dependent child	np	np	28.5	35.5	142.5	15.8
Other family person	np	np	12.3	14.6	77.3	32.2
Non-family member	11.5	46.3	57.8	65.1	481.5	32.2
Relationship not determined	**1.0	*7.2	8.2	8.4	80.0	47.4
Country of birth						
Born in Australia	32.8	183.3	216.1	245.7	1 605.4	25.5
Born overseas	17.5	77.4	94.9	103.1	841.3	30.3
Born in main English-speaking countries	*4.9	31.2	36.1	39.3	269.1	26.2
Born in other than main English-speaking countries	12.6	46.2	58.8	63.8	572.3	32.8
Total(b)	50.2	260.8	311.0	348.8	2 447.0	27.0

* estimate has a relative standard error of 25% to 50% and should be used with caution

** estimate has a relative standard error greater than 50% and is considered too unreliable for general use

np not available for publication but included in totals where applicable, unless otherwise indicated

(a) Proportion of people not in the labour force in each corresponding civilian population group.

(b) Includes country of birth 'Inadequately described'.

WANTED TO WORK, NOT
ACTIVELY LOOKING, BUT
WERE AVAILABLE

	Persons with marginal attachment to the labour force			Persons not in the labour force	Proportion not in the labour force (a)
	Discouraged job seekers	Other	Total		
	'000	'000	'000	'000	%

FEMALES

State or territory of usual residence						
New South Wales	20.4	145.1	165.5	180.9	1 235.1	41.0
Victoria	13.5	115.9	129.4	141.8	900.0	38.7
Queensland	13.3	88.3	101.6	109.5	714.6	38.6
South Australia	*3.1	35.3	38.4	41.4	285.4	41.4
Western Australia	*2.8	58.6	61.5	66.1	352.9	37.0
Tasmania	2.6	12.5	15.1	16.8	92.9	44.3
Northern Territory	np	np	4.3	4.8	19.2	24.3
Australian Capital Territory	np	np	7.0	7.9	46.2	30.6
Age group (years)						
15–19	np	np	72.2	79.7	308.4	43.2
20–24	np	np	43.8	52.9	200.5	24.8
25–34	*2.8	117.3	120.1	130.2	405.1	24.5
35–44	*7.3	113.9	121.2	133.2	378.1	23.3
45–54	8.6	58.3	66.9	73.0	332.1	21.6
55–59	*3.8	22.0	25.8	27.0	229.9	33.0
60–64	9.6	19.4	29.0	29.4	342.7	54.0
65–69	8.7	15.7	24.4	24.4	410.7	79.9
70 and over	8.9	10.5	19.3	19.3	1 039.0	96.4
Relationship in household						
Family member						
Husband, wife or partner	41.8	421.2	463.0	503.2	2 829.3	37.1
Lone parent	28.8	260.2	289.0	306.7	1 960.5	36.6
Dependent student	8.5	78.8	87.2	96.6	355.3	43.2
Non-dependent child	*3.0	63.2	66.3	73.2	292.3	45.7
Other family person	np	np	12.0	16.9	83.5	15.1
Non-family member						
Relationship not determined	np	np	8.6	9.8	137.8	54.6
Non-family member	13.5	38.5	52.0	56.3	725.7	48.4
Relationship not determined	**1.0	*6.7	7.7	9.7	91.4	60.7
Country of birth						
Born in Australia	34.8	325.3	360.1	392.3	2 377.1	37.0
Born overseas	21.5	141.1	162.6	176.9	1 267.4	44.7
Born in main English-speaking countries	*5.9	43.6	49.5	53.1	380.3	38.1
Born in other than main English-speaking countries	15.6	97.6	113.2	123.9	887.1	48.2
<i>Total(b)</i>	56.3	466.4	522.7	569.3	3 646.5	39.3

* estimate has a relative standard error of 25% to 50% and should be used with caution

np not available for publication but included in totals where applicable, unless otherwise indicated

** estimate has a relative standard error greater than 50% and is considered too unreliable for general use

(a) Proportion of people not in the labour force in each corresponding civilian population group.

(b) Includes country of birth 'Inadequately described'.

	WANTED TO WORK, NOT ACTIVELY LOOKING, BUT WERE AVAILABLE			<i>Persons with marginal attachment to the labour force</i>	<i>Persons not in the labour force</i>	<i>Proportion not in the labour force (a)</i>
	<i>Discouraged job seekers</i>	<i>Other</i>	<i>Total</i>			
	'000	'000	'000			
PERSONS						
State or territory of usual residence						
New South Wales	42.1	220.5	262.6	291.0	2 058.0	34.7
Victoria	26.6	186.5	213.0	234.4	1 515.5	33.0
Queensland	21.0	140.6	161.6	174.8	1 190.0	32.3
South Australia	5.7	58.6	64.4	71.0	491.2	36.3
Western Australia	5.0	81.8	86.8	97.4	566.6	29.4
Tasmania	4.6	20.9	25.5	27.6	158.7	38.6
Northern Territory	*0.9	6.4	7.3	8.1	33.6	20.9
Australian Capital Territory	*0.7	11.9	12.5	13.8	79.8	26.9
Age group (years)						
15–19	8.9	158.0	166.9	183.0	658.6	44.9
20–24	*4.3	67.0	71.2	85.4	342.6	20.8
25–34	*3.8	151.3	155.1	173.8	541.1	16.2
35–44	12.5	135.6	148.1	165.9	503.9	15.7
45–54	12.9	81.4	94.3	104.1	502.8	16.5
55–59	*6.9	35.3	42.1	46.5	362.6	26.4
60–64	13.7	36.5	50.2	52.5	560.0	44.9
65–69	19.7	36.5	56.2	57.2	750.5	73.4
70 and over	24.0	25.6	49.6	49.6	1 871.4	93.6
Relationship in household						
Family member	79.5	628.5	708.0	778.6	4 714.8	31.4
Husband, wife or partner	56.2	339.0	395.1	425.0	3 212.4	29.7
Lone parent	9.4	85.9	95.3	106.5	414.4	41.2
Dependent student	8.9	147.4	156.3	170.3	646.9	51.0
Non-dependent child	*2.1	38.3	40.5	52.4	226.0	15.5
Other family person	*2.9	18.0	20.9	24.3	215.1	43.7
Non-family member	25.0	84.8	109.8	121.4	1 207.2	40.3
Relationship not determined	*2.0	13.9	15.9	18.1	171.4	53.7
Country of birth						
Born in Australia	67.6	508.6	576.2	638.0	3 982.5	31.3
Born overseas	39.0	218.6	257.5	280.1	2 108.7	37.6
Born in main English-speaking countries	10.8	74.8	85.6	92.4	649.3	32.1
Born in other than main English-speaking countries	28.2	143.8	172.0	187.7	1 459.4	40.7
Total(b)	106.6	727.2	833.7	918.1	6 093.5	33.2

* estimate has a relative standard error of 25% to 50% and should be used with caution

(a) Proportion of people not in the labour force in each corresponding civilian population group.

(b) Includes country of birth 'Inadequately described'.

PERSONS NOT IN THE LABOUR FORCE, Time since last job and main activity when not in the labour force—By sex and By marginal attachment

	WANTED TO WORK, NOT ACTIVELY LOOKING, BUT WERE AVAILABLE			<i>Persons with marginal attachment to the labour force</i>	<i>Persons not in the labour force</i>
	<i>Discouraged job seekers</i>	<i>Other</i>	<i>Total</i>		
	'000	'000	'000		
MALES					
Time since last job					
Had a job	43.9	180.6	224.5	256.2	1 987.6
Under 12 months	7.9	71.7	79.6	98.7	258.2
1 and under 3 years	*6.3	46.7	53.0	60.6	265.1
3 and under 5 years	9.7	21.2	30.8	32.7	196.9
5 and under 10 years	9.0	24.0	33.0	35.5	344.2
10 and under 20 years	8.1	11.4	19.4	20.0	505.0
20 years or more	*2.9	*5.7	8.6	8.8	418.1
Never had a job	*6.4	80.2	86.6	92.6	459.4
Main activity when not in the labour force					
Retired or voluntarily inactive	20.5	28.5	49.0	51.0	942.9
Home duties	*6.7	20.6	27.3	32.4	182.1
Caring for children	*2.5	12.5	15.0	17.4	39.3
Attending an educational institution	8.0	112.2	120.2	133.2	511.1
Own long-term health condition or disability	**0.9	29.3	30.2	32.8	401.9
Own short-term illness or injury	np	np	7.5	9.3	37.7
Looking after ill or disabled person	**1.7	7.8	9.5	11.4	76.2
Travel, holiday or leisure activity	*3.1	21.7	24.8	27.4	140.8
Working in unpaid voluntary job	*2.8	*4.4	*7.1	*7.1	57.8
Other	np	np	20.4	26.9	57.3
<i>Total</i>	50.2	260.8	311.0	348.8	2 447.0
FEMALES					
Time since last job					
Had a job	49.0	378.2	427.2	465.8	3 001.4
Under 12 months	*5.0	112.0	117.0	134.7	379.7
1 and under 3 years	10.9	82.3	93.2	103.6	366.1
3 and under 5 years	*7.3	54.8	62.1	64.6	271.2
5 and under 10 years	7.7	63.6	71.3	76.7	448.6
10 and under 20 years	9.9	49.8	59.7	62.4	561.0
20 years or more	8.1	15.6	23.7	23.7	974.9
Never had a job	*7.3	88.3	95.6	103.5	645.0
Main activity when not in the labour force					
Retired or voluntarily inactive	*7.0	15.6	22.6	22.6	912.3
Home duties	26.7	142.9	169.6	178.4	1 087.3
Caring for children	*4.9	131.8	136.6	148.3	426.7
Attending an educational institution	*6.6	98.6	105.3	122.5	496.4
Own long-term health condition or disability	*1.9	18.4	20.3	22.1	287.8
Own short-term illness or injury	np	np	12.6	14.1	37.3
Looking after ill or disabled person	**1.4	17.2	18.6	18.6	158.0
Travel, holiday or leisure activity	*2.4	13.8	16.2	17.7	125.0
Working in unpaid voluntary job	*3.7	*6.3	10.0	10.9	79.0
Other	np	np	11.0	14.1	36.5
<i>Total</i>	56.3	466.4	522.7	569.3	3 646.5
<p>* estimate has a relative standard error of 25% to 50% and should be used with caution</p> <p>** estimate has a relative standard error greater than 50% and is considered too unreliable for general use</p> <p>np not available for publication but included in totals where applicable, unless otherwise indicated</p>					

PERSONS NOT IN THE LABOUR FORCE, Time since last job and main activity when not in the labour force—By sex and By marginal attachment *continued*

	WANTED TO WORK, NOT ACTIVELY LOOKING, BUT WERE AVAILABLE			<i>Persons with marginal attachment to the labour force</i>	<i>Persons not in the labour force</i>
	<i>Discouraged job seekers</i>	<i>Other</i>	<i>Total</i>		
	'000	'000	'000		
PERSONS					
Time since last job					
Had a job	92.9	558.8	651.6	722.0	4 989.0
Under 12 months	12.9	183.6	196.6	233.4	637.9
1 and under 3 years	17.2	129.0	146.2	164.2	631.2
3 and under 5 years	17.0	76.0	93.0	97.3	468.1
5 and under 10 years	16.7	87.6	104.3	112.2	792.8
10 and under 20 years	18.0	61.2	79.2	82.4	1 066.0
20 years or more	11.1	21.3	32.4	32.5	1 393.0
Never had a job	13.7	168.4	182.1	196.1	1 104.4
Main activity when not in the labour force					
Retired or voluntarily inactive	27.5	44.1	71.6	73.5	1 855.2
Home duties	33.4	163.4	196.9	210.8	1 269.4
Caring for children	7.4	144.2	151.6	165.7	466.0
Attending an educational institution	14.7	210.8	225.5	255.7	1 007.5
Own long-term health condition or disability	*2.8	47.8	50.5	54.9	689.7
Own short-term illness or injury	**1.7	18.4	20.0	23.4	75.0
Looking after ill or disabled person	*3.1	25.0	28.1	29.9	234.3
Travel, holiday or leisure activity	*5.5	35.5	41.1	45.1	265.8
Working in unpaid voluntary job	*6.4	10.7	17.1	18.0	136.8
Other	*4.2	27.2	31.4	41.0	93.8
Total	106.6	727.2	833.7	918.1	6 093.5

* estimate has a relative standard error of 25% to 50% and should be used with caution

** estimate has a relative standard error greater than 50% and is considered too unreliable for general use

5

PERSONS WITH MARGINAL ATTACHMENT NOT ACTIVELY LOOKING FOR WORK(a), Intention to enter the labour force in the next 12 months and full-time or part-time preference

	INTENTION TO ENTER THE LABOUR FORCE IN THE NEXT 12 MONTHS			FULL-TIME OR PART-TIME PREFERENCE(b)		Total(c)(d)
	<i>Intends to enter</i>	<i>Might enter</i>	<i>Does not intend to enter</i>	<i>Full-time</i>	<i>Part-time</i>	
	'000	'000	'000	'000	'000	
Sex						
Males	173.9	46.7	76.4	82.7	121.3	311.0
Females	267.2	91.0	138.6	72.4	263.7	522.7
Main reason not actively looking for work						
Wanted to work but were not actively looking for work and were available to start work within four weeks	441.2	137.6	215.0	155.2	385.0	833.7
Discouraged jobseekers(e)	39.7	14.6	48.0	17.7	34.1	106.6
Lacked the necessary schooling, training, skills or experience	*7.2	**1.1	*3.6	*2.6	*4.8	14.1
No jobs in locality or line of work	11.0	*3.7	*6.0	*6.2	8.0	20.8
No jobs at all	*5.6	np	np	*3.0	*3.1	8.6
Believes ill health or disability discourges employers	*1.8	**1.6	*3.9	**1.2	*2.0	7.4
Considered too old by employers	*4.0	*3.1	30.4	**0.9	*6.2	37.9
No jobs with suitable hours	*6.5	np	np	**1.5	*7.2	9.5
Other	401.4	123.0	167.1	137.5	350.9	727.2
Personal reasons(f)	197.4	66.4	74.8	61.9	181.9	356.5
Own short-term illness or injury	18.0	*5.5	*4.2	*6.3	14.7	29.8
Own long-term health condition or disability	25.9	17.8	24.0	12.2	26.4	74.5
Attending an educational institution	126.8	27.1	17.4	32.4	111.8	178.7
Other personal reasons	25.1	14.4	26.3	10.3	26.4	67.3
Family reasons	103.8	45.7	70.6	30.5	111.4	233.5
Ill health of other than self	7.7	*5.4	*6.7	**1.5	10.7	21.8
Caring for children	74.5	30.6	44.5	21.3	79.4	156.3
Other family considerations	21.5	9.7	19.3	7.7	21.4	55.4
Other reasons	40.3	*7.0	15.3	21.4	23.8	65.3
Had a job to go to	50.8	*2.1	**1.2	20.5	28.4	54.5
Did not know	9.2	*1.8	*5.1	*3.2	*5.3	17.4
Total	441.2	137.6	215.0	155.2	385.0	833.7

* estimate has a relative standard error of 25% to 50% and should be used with caution

** estimate has a relative standard error greater than 50% and is considered too unreliable for general use

np not available for publication but included in totals where applicable, unless otherwise indicated

(a) This table is restricted to those who wanted to work but were not actively looking for work and were available to start work within four weeks.

(b) Data related to people who intend to or might enter the labour force in the next 12 months.

(c) Includes people who 'Did not know' whether they intended to enter the labour force in the next 12 months.

(d) Includes people who had 'No preference' for full-time or part-time work or were undecided.

(e) Includes 'Considered too young by employers' and 'Difficulties because of language or ethnic background'.

(f) Includes 'Pregnancy'.

PERSONS WITH MARGINAL ATTACHMENT NOT ACTIVELY LOOKING FOR WORK, Main reason for not actively looking for work—By age groups (years) and sex

	AGE GROUP (YEARS)						SEX		
	15-24	25-34	35-44	45-54	55-69	70 and over	Males	Females	Total
	'000	'000	'000	'000	'000	'000	'000	'000	'000
Discouraged job seekers(a)	13.2	*3.8	12.5	12.9	40.2	24.0	50.2	56.3	106.6
Considered too old by employers	—	np	—	np	18.7	19.1	20.3	17.6	37.9
Lacked the necessary schooling, training, skills or experience	*2.7	**0.8	*3.9	*3.8	*1.8	**1.1	*4.0	10.0	14.1
No jobs in suitable hours	*2.4	np	*2.3	np	**0.9	np	*3.3	*6.3	9.5
No jobs in locality or line of work/No jobs at all	*5.4	np	*4.2	*4.8	12.6	np	13.7	15.6	29.4
Other	225.0	151.3	135.6	81.4	108.3	25.6	260.8	466.4	727.2
Personal reasons(b)	169.0	37.2	34.9	40.7	57.0	17.7	169.9	186.6	356.5
Own short-term illness or injury	*4.3	*3.5	7.4	*6.9	*6.1	**1.5	9.2	20.6	29.8
Own long-term health condition or disability	*5.3	7.9	8.3	22.6	24.8	*5.6	40.0	34.5	74.5
Attending an educational institution	146.2	16.4	11.0	*3.3	*1.8	—	90.7	88.0	178.7
Other personal reasons	10.9	*6.5	*7.3	7.8	24.2	10.6	30.0	37.2	67.3
Family reasons	20.1	89.5	81.2	20.4	20.3	*2.0	23.8	209.7	233.5
Caring for children	13.3	73.4	60.6	*6.9	*2.0	—	10.2	146.0	156.3
Ill health of other than self	np	*3.5	*5.6	*3.7	7.5	np	*6.3	15.5	21.8
Other family considerations	np	12.6	14.9	9.7	10.8	np	*7.3	48.1	55.4
Other reasons	17.4	10.8	*5.8	8.2	18.4	*4.6	36.5	28.8	65.3
Had a job to go to	12.2	11.2	11.7	10.6	np	np	19.6	34.9	54.5
Did not know	*6.2	*2.5	*2.1	**1.5	np	np	11.1	*6.4	17.4
Total	238.2	155.1	148.1	94.3	148.6	49.6	311.0	522.7	833.7

* estimate has a relative standard error of 25% to 50% and should be used with caution

** estimate has a relative standard error greater than 50% and is considered too unreliable for general use

— nil or rounded to zero (including null cells)

np not available for publication but included in totals where applicable, unless otherwise indicated

(a) Includes 'Considered too young by employers', 'Believes ill health or disability discourages employers' and 'Difficulties because of language or ethnic background'.

(b) Includes 'Pregnancy'.

7

PERSONS NOT IN THE LABOUR FORCE WHO WERE DISCOURAGED JOB SEEKERS, Selected characteristics—By sex

	<i>Males</i>	<i>Females</i>	<i>Persons</i>
	'000	'000	'000
.....			
Age group (years)			
15–24	*6.5	*6.7	13.2
25–34	**0.9	*2.8	*3.8
35–44	*5.2	*7.3	12.5
45–54	*4.3	8.6	12.9
55–59	*3.0	*3.8	*6.9
60–64	*4.0	9.6	13.7
65–69	11.1	8.7	19.7
70 and over	15.2	8.9	24.0
Whether looked for work in the last 12 months			
Had looked for work	14.9	13.5	28.4
Less than 13 weeks ago	9.7	11.5	21.1
13 weeks to 52 weeks ago	*5.2	*2.0	*7.3
Had not looked for work	35.3	42.8	78.2
Intention to enter the labour force in the next 12 months			
Intends to enter	19.5	20.2	39.7
Might enter	*5.4	9.3	14.6
Does not intend to enter	24.5	23.5	48.0
Time since last job			
Had a job	43.9	49.0	92.9
Under 12 months	7.9	*5.0	12.9
1 and under 3 years	*6.3	10.9	17.2
3 and under 5 years	9.7	*7.3	17.0
5 and under 10 years	9.0	7.7	16.7
10 and under 20 years	8.1	9.9	18.0
20 years or more	*2.9	8.1	11.1
Never had a job	*6.4	*7.3	13.7
Total(a)	50.2	56.3	106.6

* estimate has a relative standard error of 25% to 50% and should be used with caution

** estimate has a relative standard error greater than 50% and is considered too unreliable for general use

(a) Includes people who 'Did not know' whether they intend to enter the labour force in the next 12 months.

	<i>Wanted to work but were not actively looking for work and were not available</i>	<i>Did not want to work(a)</i>	<i>Persons without marginal attachment(b)</i>	<i>Persons not in the labour force</i>
	'000	'000	'000	'000
MALES				
State or territory of usual residence				
New South Wales	40.2	562.2	712.7	822.9
Victoria	35.6	427.3	522.8	615.4
Queensland	16.6	331.1	410.1	475.4
South Australia	11.2	149.2	176.2	205.8
Western Australia	11.4	152.9	182.4	213.7
Tasmania	4.5	43.4	55.1	65.8
Northern Territory	*0.7	8.2	11.2	14.4
Australian Capital Territory	*0.9	24.5	27.8	33.7
Age group (years)				
15–19	22.5	219.7	247.0	350.2
20–24	15.1	88.6	109.6	142.1
25–34	14.8	61.3	92.4	136.0
35–44	19.2	42.7	93.0	125.7
45–54	17.6	70.3	139.7	170.8
55–59	8.8	68.8	113.3	132.8
60–64	10.3	126.9	194.2	217.2
65–69	*6.4	277.8	306.9	339.8
70 and over	*6.3	742.7	802.1	832.3
Relationship in household				
Family member	94.4	1 322.7	1 610.2	1 885.5
Husband, wife or partner	47.2	950.7	1 133.7	1 252.0
Lone parent	*4.1	35.4	49.2	59.1
Dependent student	25.4	229.4	257.6	354.6
Non-dependent child	13.7	61.0	107.0	142.5
Other family person	*3.9	46.1	62.8	77.3
Non-family member	22.4	316.6	416.4	481.5
Relationship not determined	*4.1	59.4	71.6	80.0
Country of birth				
Born in Australia	83.1	1 079.1	1 359.7	1 605.4
Born overseas	37.8	619.4	738.2	841.3
Born in main English-speaking Countries	10.0	197.3	229.7	269.1
Born in other than main English-speaking countries	27.8	422.1	508.5	572.3
Time since last job				
Had a job	93.4	1 400.6	1 731.4	1 987.6
Under 12 months	34.6	114.1	159.5	258.2
1 and under 3 years	22.9	156.2	204.5	265.1
3 and under 5 years	11.6	126.8	164.3	196.9
5 and under 10 years	13.2	248.5	308.7	344.2
10 and under 20 years	10.0	402.9	485.0	505.0
20 years or more	**1.1	352.1	409.4	418.1
Never had a job	27.5	298.2	366.8	459.4
Main activity when not in the labour force				
Retired or voluntarily inactive	8.2	817.1	891.9	942.9
Home duties	8.3	121.7	149.7	182.1
Caring for children	*4.0	14.2	21.9	39.3
Attending an educational institution	41.9	331.8	377.9	511.1
Own long-term health condition or disability	36.8	174.0	369.1	401.9
Own short-term illness or injury	10.1	14.5	28.4	37.7
Looking after ill or disabled person	*6.1	51.0	64.9	76.2
Travel, holiday or leisure activity	**0.8	106.1	113.4	140.8
Working in unpaid voluntary job	**1.5	44.2	50.7	57.8
Other	*3.4	24.0	30.4	57.3
Total(c)	120.9	1 698.7	2 098.2	2 447.0

* estimate has a relative standard error of 25% to 50% and should be used with caution

** estimate has a relative standard error greater than 50% and is considered too unreliable for general use

(a) Includes people who 'Did not know'.

(b) Includes 543,400 people (278,500 men and 264,900 women) who were 'Permanently unable to work'.

(c) Includes country of birth 'Inadequately described'.

	Wanted to work but were not actively looking for work and were not available	Did not want to work(a)	Persons without marginal attachment(b)	Persons not in the labour force
	'000	'000	'000	'000
FEMALES				
State or territory of usual residence				
New South Wales	76.3	867.8	1 054.2	1 235.1
Victoria	63.1	637.5	758.2	900.0
Queensland	41.0	510.9	605.1	714.6
South Australia	16.0	213.7	244.0	285.4
Western Australia	27.4	240.9	286.8	352.9
Tasmania	6.1	65.2	76.1	92.9
Northern Territory	1.3	10.3	14.4	19.2
Australian Capital Territory	2.9	32.2	38.3	46.2
Age group (years)				
15–19	24.4	201.3	228.7	308.4
20–24	24.7	117.0	147.6	200.5
25–34	78.6	183.9	274.9	405.1
35–44	48.6	172.7	244.9	378.1
45–54	27.9	183.8	259.1	332.1
55–59	10.0	154.9	202.8	229.9
60–64	10.4	249.3	313.3	342.7
65–69	*5.4	362.2	386.3	410.7
70 and over	*3.9	953.4	1 019.7	1 039.0
Relationship in household				
Family member	203.3	1 941.9	2 326.0	2 829.3
Husband, wife or partner	137.4	1 412.5	1 653.7	1 960.5
Lone parent	32.3	186.8	258.7	355.3
Dependent student	21.4	195.2	219.1	292.3
Non-dependent child	9.1	38.9	66.5	83.5
Other family person	*3.0	108.5	128.0	137.8
Non-family member	25.4	566.5	669.4	725.7
Relationship not determined	*5.3	69.9	81.7	91.4
Country of birth				
Born in Australia	145.0	1 664.0	1 984.8	2 377.1
Born overseas	88.7	912.7	1 090.5	1 267.4
Born in main English-speaking Countries	25.5	281.6	327.2	380.3
Born in other than main English-speaking countries	63.1	631.1	763.3	887.1
Time since last job				
Had a job	195.9	2 136.5	2 535.6	3 001.4
Under 12 months	73.1	165.3	245.0	379.7
1 and under 3 years	44.1	208.8	262.6	366.1
3 and under 5 years	27.1	164.5	206.6	271.2
5 and under 10 years	26.3	312.5	371.9	448.6
10 and under 20 years	18.4	431.4	498.5	561.0
20 years or more	*7.0	854.1	951.1	974.9
Never had a job	38.0	441.8	541.6	645.0
Main activity when not in the labour force				
Retired or voluntarily inactive	*4.9	826.6	889.8	912.3
Home duties	55.6	787.0	908.9	1 087.3
Caring for children	78.4	198.0	278.4	426.7
Attending an educational institution	53.7	314.7	373.9	496.4
Own long-term health condition or disability	14.7	140.6	265.7	287.8
Own short-term illness or injury	*7.1	11.4	23.2	37.3
Looking after ill or disabled person	12.4	118.6	139.5	158.0
Travel, holiday or leisure activity	*2.7	101.6	107.3	125.0
Working in unpaid voluntary job	*1.8	64.4	68.2	79.0
Other	*2.5	15.5	22.4	36.5
Total(c)	233.9	2 578.4	3 077.2	3 646.5

* estimate has a relative standard error of 25% to 50% and should be used with caution

(b) Includes 543,400 people (278,500 men and 264,900 women) who were 'Permanently unable to work'.

(a) Includes people who 'Did not know'.

(c) Includes country of birth 'Inadequately described'.

	<i>Wanted to work but were not actively looking for work and were not available</i>	<i>Did not want to work(a)</i>	<i>Persons without marginal attachment(b)</i>	<i>Persons not in the labour force</i>
	'000	'000	'000	'000
PERSONS				
State or territory of usual residence				
New South Wales	116.4	1 429.9	1 767.0	2 058.0
Victoria	98.6	1 064.8	1 281.1	1 515.5
Queensland	57.5	842.0	1 015.2	1 190.0
South Australia	27.3	362.9	420.2	491.2
Western Australia	38.8	393.8	469.1	566.6
Tasmania	10.5	108.6	131.2	158.7
Northern Territory	1.9	18.5	25.6	33.6
Australian Capital Territory	3.8	56.7	66.1	79.8
Age group (years)				
15–19	46.9	420.9	475.7	658.6
20–24	39.8	205.5	257.2	342.6
25–34	93.5	245.2	367.3	541.1
35–44	67.8	215.4	337.9	503.9
45–54	45.4	254.2	398.8	502.8
55–59	18.8	223.7	316.2	362.6
60–64	20.7	376.1	507.4	560.0
65–69	11.8	639.9	693.2	750.5
70 and over	10.3	1 696.1	1 821.8	1 871.4
Relationship in household				
Family member	297.6	3 264.6	3 936.3	4 714.8
Husband, wife or partner	184.6	2 363.3	2 787.4	3 212.4
Lone parent	36.4	222.2	307.9	414.4
Dependent student	46.9	424.6	476.6	646.9
Non-dependent child	22.8	99.9	173.6	226.0
Other family person	*6.9	154.6	190.8	215.1
Non-family member	47.8	883.2	1 085.8	1 207.2
Relationship not determined	9.4	129.4	153.3	171.4
Country of birth				
Born in Australia	228.1	2 743.1	3 344.5	3 982.5
Born overseas	126.5	1 532.1	1 828.6	2 108.7
Born in main English-speaking Countries	35.6	478.9	556.9	649.3
Born in other than main English-speaking countries	91.0	1 053.2	1 271.7	1 459.4
Time since last job				
Had a job	289.4	3 537.1	4 267.1	4 989.0
Under 12 months	107.6	279.5	404.5	637.9
1 and under 3 years	67.0	365.0	467.1	631.2
3 and under 5 years	38.7	291.3	370.8	468.1
5 and under 10 years	39.5	560.9	680.6	792.8
10 and under 20 years	28.4	834.3	983.5	1 066.0
20 years or more	8.1	1 206.1	1 360.5	1 393.0
Never had a job	65.5	740.0	908.3	1 104.4
Main activity when not in the labour force				
Retired or voluntarily inactive	13.2	1 643.7	1 781.7	1 855.2
Home duties	63.9	908.7	1 058.6	1 269.4
Caring for children	82.4	212.2	300.4	466.0
Attending an educational institution	95.5	646.5	751.8	1 007.5
Own long-term health condition or disability	51.6	314.6	634.7	689.7
Own short-term illness or injury	17.1	26.0	51.6	75.0
Looking after ill or disabled person	18.5	169.6	204.3	234.3
Travel, holiday or leisure activity	*3.5	207.7	220.7	265.8
Working in unpaid voluntary job	*3.3	108.6	118.8	136.8
Other	*5.9	39.5	52.8	93.8
Total(c)	354.9	4 277.1	5 175.4	6 093.5

* estimate has a relative standard error of 25% to 50% and should be used with caution

(b) Includes 543,400 people (278,500 men and 264,900 women) who were 'Permanently unable to work'.

(a) Includes people who 'Did not know'.

(c) Includes country of birth 'Inadequately described'.

	NOT ACTIVELY LOOKING BUT AVAILABLE FOR WORK		NOT ACTIVELY LOOKING AND NOT AVAILABLE FOR WORK(b)		Total
	<i>All reasons for not actively looking for work included 'Caring for children'</i>	<i>Main reason not actively looking for work was 'Caring for children'</i>	<i>All reasons not available to start work included 'Caring for children'</i>	<i>Main reason not available to start work was 'Caring children'</i>	
	'000	'000	'000	'000	'000
Sex					
Males	13.6	10.2	*2.4	**1.6	16.0
Females	169.3	146.0	74.0	71.3	243.2
Age group (years)					
15-24	14.7	13.3	*5.7	*5.7	20.4
25-34	81.6	73.4	41.1	40.0	122.6
35-44	69.8	60.6	19.7	18.4	89.5
45 and over	16.8	9.0	9.9	8.7	26.6
Age of youngest child					
0-2 years	97.0	88.5	55.8	54.8	152.8
3-4 years	36.8	29.5	*5.9	*5.1	42.7
5 years	13.4	12.7	*2.2	*2.2	15.6
6-12 years	28.9	21.2	*5.1	*3.9	34.0
Relationship in household					
Family member(c)	180.9	155.4	75.3	71.8	256.2
Husband, wife or partner	132.4	113.8	63.2	60.9	195.7
Lone parent	48.4	41.6	11.3	10.1	59.7
Country of birth					
Born in Australia	119.5	101.0	46.2	43.0	165.7
Born overseas	63.4	55.3	29.9	29.6	93.3
Born in main English-speaking countries	19.7	17.0	9.6	9.6	29.3
Born in other than main English-speaking countries	43.7	38.3	20.3	20.1	64.0
Total(d)(e)(f)	182.9	156.3	76.3	72.9	259.2

* estimate has a relative standard error of 25% to 50% and should be used with caution

** estimate has a relative standard error greater than 50% and is considered too unreliable for general use

(a) Persons not in the labour force because they were caring for children, who wanted to work but not actively looking for work.

(b) People who were not actively looking for work and not available for work were not asked the reasons why they were not actively looking for work. They were only asked the reasons why they were not available.

(c) Includes 'Non-dependent child'.

(d) Includes Country of birth 'Inadequately described'.

(e) Includes people whose youngest child was 13 years and over, and age of youngest child 'Not applicable'.

(f) Includes 'Non-family member' and 'Relationship not determined'.

	STATUS IN EMPLOYMENT IN LAST JOB		FULL-TIME OR PART-TIME STATUS IN LAST JOB		
	Employee '000	Own account worker/Employer/Other(b) '000	Full-time '000	Part-time '000	Total(a) '000
MALES					
Reason for ceasing last job					
Lost a job	320.2	28.5	224.4	115.4	348.7
Retrenched, made redundant, employer went out of business, dismissed, no work was available	201.2	*5.9	149.4	54.8	207.0
Job was temporary or seasonal	76.9	*6.2	31.1	46.5	83.2
Own business closed down for economic reasons	7.5	12.4	16.7	*3.1	19.8
Own short-term illness or injury	34.6	*4.1	27.1	11.0	38.7
Left a job(c)	1 015.0	205.8	990.9	205.5	1 220.8
Unsatisfactory work arrangements	39.2	*2.2	23.6	16.0	41.4
Retired, did not want to work any longer	483.6	109.3	520.8	66.0	592.9
Own long-term health condition or disability	304.9	58.8	307.2	47.6	363.7
Returned to studies	63.2	*2.1	28.3	35.6	65.3
To look after family, house or someone else	47.3	11.1	44.5	12.6	58.4
To have holidays, moved house or spouse transferred	29.3	*3.7	20.0	11.8	33.0
Own business closed down for other than economic reasons	11.3	13.5	21.0	*3.3	24.9
Other	35.5	*4.4	25.2	12.5	39.9
Occupation of last job					
Managers	141.4	66.2	195.0	12.4	207.6
Professionals	176.4	38.8	166.7	43.0	215.2
Technicians and trades workers	277.5	63.8	296.9	37.6	341.2
Community and personal service workers	75.9	*2.5	46.4	29.0	78.4
Clerical and administrative workers	106.5	*6.9	85.3	25.2	113.4
Sales workers	92.7	13.5	68.6	37.1	106.2
Machinery operators and drivers	189.9	18.2	172.0	31.4	208.2
Labourers	261.1	24.2	174.2	102.1	285.3
Whether looked for work in the last 12 months					
Had looked for work	115.1	10.9	66.2	57.0	126.0
Less than 13 weeks ago	88.0	7.5	49.5	43.7	95.5
13 weeks and less than 26 weeks ago	np	np	*6.3	*5.9	12.3
26 weeks to 52 weeks ago	np	np	10.3	7.4	18.2
Had not looked for work	1 220.1	223.4	1 149.0	263.8	1 443.5
Time since last job					
Under 12 months	228.9	29.3	151.7	102.0	258.2
1 year and under 3 years	231.6	33.5	179.9	75.8	265.1
3 years and under 5 years	164.8	32.2	152.1	42.5	196.9
5 years and under 10 years	280.3	63.9	283.6	51.9	344.2
10 years and under 20 years	429.7	75.4	448.0	48.7	505.0
20 years or more	—	—	—	—	—
Total	1 335.2	234.3	1 215.3	320.9	1 569.5

* estimate has a relative standard error of 25% to 50% and should be used with caution

— nil or rounded to zero (including null cells)

np not available for publication but included in totals where applicable, unless otherwise indicated

(a) Includes people whose full-time or part-time status in their last job was 'Varied' or they 'Did not know'.

(b) Includes 'Contributing family workers' and 'Unpaid voluntary workers'.

(c) Includes 'Pregnancy or to have children' and 'To get married'.

continued

	STATUS IN EMPLOYMENT IN LAST JOB		FULL-TIME OR PART-TIME STATUS IN LAST JOB		
	Employee '000	Own account worker/Employer/Other(b) '000	Full-time '000	Part-time '000	Total(a) '000
FEMALES					
Reason for ceasing last job					
Lost a job	325.0	24.3	155.5	183.1	349.3
Retrenched, made redundant, employer went out of business, dismissed, no work was available	193.9	*5.3	93.7	102.0	199.2
Job was temporary or seasonal	74.3	*5.9	20.9	54.8	80.2
Own business closed down for economic reasons	*5.4	11.7	11.8	*4.5	17.2
Own short-term illness or injury	51.3	**1.4	29.1	21.9	52.7
Left a job(c)	1 542.9	134.4	965.8	665.0	1 677.3
Unsatisfactory work arrangements	60.5	**1.7	23.5	36.0	62.2
Retired, did not want to work any longer	464.8	56.7	330.9	175.4	521.5
Own long-term health condition or disability	220.9	20.0	133.8	97.9	240.9
Returned to studies	83.7	**1.2	25.0	58.3	84.9
To look after family, house or someone else	137.5	11.9	78.6	68.2	149.4
To have holidays, moved house or spouse transferred	100.6	*4.1	53.7	47.6	104.7
Own business closed down for other than economic reasons	11.2	18.8	20.7	8.8	30.0
Other	62.2	*5.7	35.1	29.4	67.9
Occupation of last job					
Managers	101.4	52.3	125.0	27.1	153.8
Professionals	308.6	20.3	212.5	105.4	328.9
Technicians and trades workers	91.5	11.9	65.3	34.6	103.4
Community and personal service workers	291.5	12.5	133.7	162.7	304.1
Clerical and administrative workers	428.4	21.3	288.0	153.4	449.8
Sales workers	264.8	19.8	109.3	168.0	284.5
Machinery operators and drivers	54.8	*4.6	43.1	13.2	59.4
Labourers	315.6	14.5	138.6	180.0	330.2
Whether looked for work in the last 12 months					
Had looked for work	170.4	*6.6	80.1	91.3	177.1
Less than 13 weeks ago	129.5	*5.3	60.9	69.3	134.7
13 weeks and less than 26 weeks ago	np	np	8.2	10.7	18.8
26 weeks to 52 weeks ago	np	np	11.0	11.3	23.5
Had not looked for work	1 697.4	152.1	1 041.2	756.8	1 849.5
Time since last job					
Under 12 months	352.8	26.9	163.8	204.7	379.7
1 year and under 3 years	346.5	19.7	179.9	176.0	366.1
3 years and under 5 years	254.4	16.7	148.3	117.8	271.2
5 years and under 10 years	404.5	44.1	265.8	171.8	448.6
10 years and under 20 years	509.7	51.2	363.5	177.7	561.0
20 years or more	—	—	—	—	—
Total	1 867.8	158.7	1 121.3	848.0	2 026.5

- * estimate has a relative standard error of 25% to 50% and should be used with caution
- ** estimate has a relative standard error greater than 50% and is considered too unreliable for general use
- nil or rounded to zero (including null cells)
- np not available for publication but included in totals where applicable, unless otherwise indicated
- (a) Includes people whose full-time or part-time status in their last job was 'Varied' or they 'Did not know'.
- (b) Includes 'Contributing family workers' and 'Unpaid voluntary workers'.
- (c) Includes 'Pregnancy or to have children' and 'To get married'.

continued

	STATUS IN EMPLOYMENT IN LAST JOB		FULL-TIME OR PART-TIME STATUS IN LAST JOB		
	Employee	Own account	Full-time	Part-time	Total(a)
		worker/Employer/Other(b)			
	'000	'000	'000	'000	'000
PERSONS					
Reason for ceasing last job					
Lost a job	645.1	52.8	379.9	298.5	698.0
Retrenched, made redundant, employer went out of business, dismissed, no work was available	395.0	11.2	243.1	156.7	406.2
Job was temporary or seasonal	151.2	12.1	52.0	101.3	163.3
Own business closed down for economic reasons	12.9	24.1	28.5	7.6	37.0
Own short-term illness or injury	85.9	*5.4	56.3	32.9	91.4
Left a job(c)	2 557.9	340.1	1 956.6	870.4	2 898.1
Unsatisfactory work arrangements	99.6	*4.0	47.1	52.0	103.6
Retired, did not want to work any longer	948.4	166.0	851.7	241.5	1 114.4
Own long-term health condition or disability	525.8	78.8	441.1	145.5	604.6
Returned to studies	146.9	*3.3	53.3	93.9	150.2
To look after family, house or someone else	184.9	23.0	123.1	80.8	207.9
To have holidays, moved house or spouse transferred	129.9	7.8	73.7	59.5	137.7
Own business closed down for other than economic reasons	22.5	32.3	41.7	12.1	54.8
Other	97.7	10.1	60.3	41.9	107.8
Occupation of last job					
Managers	242.8	118.5	320.0	39.5	361.3
Professionals	485.1	59.1	379.2	148.4	544.1
Technicians and trades workers	368.9	75.7	362.2	72.2	444.6
Community and personal service workers	367.4	15.1	180.0	191.6	382.5
Clerical and administrative workers	534.9	28.2	373.4	178.5	563.2
Sales workers	357.5	33.3	177.9	205.1	390.8
Machinery operators and drivers	244.7	22.8	215.1	44.6	267.6
Labourers	576.7	38.8	312.8	282.1	615.5
Whether looked for work in the last 12 months					
Had looked for work	285.5	17.6	146.3	148.3	303.1
Less than 13 weeks ago	217.5	12.8	110.5	113.0	230.3
13 weeks and less than 26 weeks ago	29.8	**1.3	14.5	16.6	31.1
26 weeks to 52 weeks ago	38.2	*3.5	21.4	18.7	41.7
Had not looked for work	2 917.5	375.4	2 190.3	1 020.6	3 292.9
Time since last job					
Under 12 months	581.7	56.2	315.5	306.7	637.9
1 year and under 3 years	578.0	53.2	359.8	251.9	631.2
3 years and under 5 years	419.2	48.9	300.4	160.3	468.1
5 years and under 10 years	684.8	108.0	549.4	223.6	792.8
10 years and under 20 years	939.4	126.6	811.5	226.4	1 066.0
20 years or more	—	—	—	—	—
Total	3 203.1	393.0	2 336.6	1 168.9	3 596.0

* estimate has a relative standard error of 25% to 50% and should be used with caution

** estimate has a relative standard error greater than 50% and is considered too unreliable for general use

— nil or rounded to zero (including null cells)

(a) Includes people whose full-time or part-time status in their last job was 'Varied' or they 'Did not know'.

(b) Includes 'Contributing family workers' and 'Unpaid voluntary workers'.

(c) Includes 'Pregnancy or to have children' and 'To get married'.

	NSW	Vic.	Qld	SA	WA	Tas.	NT	ACT	Aust.
	'000	'000	'000	'000	'000	'000	'000	'000	'000
MALES									
Population 1									
Persons not in the labour force	822.9	615.4	475.4	205.8	213.7	65.8	14.4	33.7	2 447.0
Population 2									
Persons not in the labour force who wanted to work	150.3	128.2	81.8	40.8	42.7	15.2	3.9	6.8	469.8
Population 3									
Persons not in the labour force with marginal attachment to the labour force	110.2	92.6	65.3	29.6	31.3	10.7	3.2	5.9	348.8
Population 4									
Persons not in the labour force who wanted to work but were not actively looking for work and were available to start within four weeks	97.1	83.6	60.0	26.0	25.4	10.4	2.9	5.5	311.0
Population 5									
Persons not in the labour force who were discouraged job seekers	21.7	13.1	7.7	*2.7	*2.2	2.1	np	np	50.2
Population 6									
Persons not in the labour force who wanted to work but were not actively looking for work and were not available to start work within four weeks	40.2	35.6	16.6	11.2	11.4	4.5	*0.7	*0.9	120.9
Population 7									
Persons not in the labour force because they were caring for children, who wanted to work but not actively looking for work	*2.9	*4.2	*4.7	*1.7	*1.7	np	np	**0.5	16.0
Population 8									
Persons not in the labour force who previously had a job	665.9	490.0	389.7	169.2	178.6	55.5	11.7	27.0	1 987.6
Population 9									
Persons not in the labour force without marginal attachment to the labour force	712.7	522.8	410.1	176.2	182.4	55.1	11.2	27.8	2 098.2
Population 10									
Persons not in the labour force whose last job was less than 20 years ago	522.0	387.9	314.6	131.6	137.3	43.9	9.9	22.4	1 569.5

* estimate has a relative standard error of 25% to 50% and should be used with caution

** estimate has a relative standard error greater than 50% and is considered too unreliable for general use

np not available for publication but included in totals where applicable, unless otherwise indicated

	NSW	Vic.	Qld	SA	WA	Tas.	NT	ACT	Aust.
	'000	'000	'000	'000	'000	'000	'000	'000	'000
FEMALES									
Population 1									
Persons not in the labour force	1 235.1	900.0	714.6	285.4	352.9	92.9	19.2	46.2	3 646.5
Population 2									
Persons not in the labour force who wanted to work	257.1	204.9	150.5	57.4	93.5	22.9	6.1	10.8	803.2
Population 3									
Persons not in the labour force with marginal attachment to the labour force	180.9	141.8	109.5	41.4	66.1	16.8	4.8	7.9	569.3
Population 4									
Persons not in the labour force who wanted to work but were not actively looking for work and were available to start within four weeks	165.5	129.4	101.6	38.4	61.5	15.1	4.3	7.0	522.7
Population 5									
Persons not in the labour force who were discouraged job seekers	20.4	13.5	13.3	*3.1	*2.8	2.6	np	np	56.3
Population 6									
Persons not in the labour force who wanted to work but were not actively looking for work and were not available to start work within four weeks	76.3	63.1	41.0	16.0	27.4	6.1	1.3	2.9	233.9
Population 7									
Persons not in the labour force because they were caring for children, who wanted to work but not actively looking for work	85.3	59.1	44.6	11.2	33.1	np	np	2.3	243.2
Population 8									
Persons not in the labour force who previously had a job	989.6	730.3	598.7	244.4	303.9	79.8	15.2	39.5	3 001.4
Population 9									
Persons not in the labour force without marginal attachment to the labour force	1 054.2	758.2	605.1	244.0	286.8	76.1	14.4	38.3	3 077.2
Population 10									
Persons not in the labour force whose last job was less than 20 years ago	651.2	494.5	413.6	156.5	216.9	52.9	11.6	29.3	2 026.5
* estimate has a relative standard error of 25% to 50% and should be used with caution									
	np								not available for publication but included in totals where applicable, unless otherwise indicated

	NSW	Vic.	Qld	SA	WA	Tas.	NT	ACT	Aust.
	'000	'000	'000	'000	'000	'000	'000	'000	'000
PERSONS									
Population 1									
Persons not in the labour force	2 058.0	1 515.5	1 190.0	491.2	566.6	158.7	33.6	79.8	6 093.5
Population 2									
Persons not in the labour force who wanted to work	407.5	333.0	232.3	98.3	136.2	38.1	10.0	17.6	1 273.0
Population 3									
Persons not in the labour force with marginal attachment to the labour force	291.0	234.4	174.8	71.0	97.4	27.6	8.1	13.8	918.1
Population 4									
Persons not in the labour force who wanted to work but were not actively looking for work and were available to start within four weeks	262.6	213.0	161.6	64.4	86.8	25.5	7.3	12.5	833.7
Population 5									
Persons not in the labour force who were discouraged job seekers	42.1	26.6	21.0	5.7	5.0	4.6	*0.9	*0.7	106.6
Population 6									
Persons not in the labour force who wanted to work but were not actively looking for work and were not available to start work within four weeks	116.4	98.6	57.5	27.3	38.8	10.5	1.9	3.8	354.9
Population 7									
Persons not in the labour force because they were caring for children, who wanted to work but not actively looking for work	88.2	63.3	49.3	12.9	34.7	6.0	1.9	2.8	259.2
Population 8									
Persons not in the labour force who previously had a job	1 655.5	1 220.3	988.4	413.6	482.5	135.3	26.9	66.6	4 989.0
Population 9									
Persons not in the labour force without marginal attachment to the labour force	1 767.0	1 281.1	1 015.2	420.2	469.1	131.2	25.6	66.1	5 175.4
Population 10									
Persons not in the labour force whose last job was less than 20 years ago	1 173.2	882.4	728.1	288.1	354.2	96.9	21.4	51.8	3 596.0

* estimate has a relative standard error of 25% to 50% and should be used with caution

EXPLANATORY NOTES

INTRODUCTION

1 The statistics in this publication were compiled from data collected in the Persons Not in the Labour Force Survey that was conducted throughout Australia in September 2012 as a supplement to the monthly Labour Force Survey (LFS). Respondents to the LFS who were in scope of the supplementary survey were asked further questions.

2 The publication *Labour Force, Australia* (cat. no. 6202.0) contains information about survey design, sample design, scope, coverage and population benchmarks relevant to the monthly LFS, which also applies to supplementary surveys. It also contains definitions of demographic and labour force characteristics, and information about telephone interviewing relevant to both the monthly LFS and supplementary surveys.

CONCEPTS SOURCES AND METHODS

3 The conceptual framework used in Australia's LFS aligns closely with the standards and guidelines set out in Resolutions of the International Conference of Labour Statisticians. Descriptions of the underlying concepts and structure of Australia's labour force statistics, and the sources and methods used in compiling these estimates, are presented in *Labour Statistics: Concepts, Sources and Methods* (cat. no. 6102.0.55.001).

SCOPE

4 The scope of the LFS is restricted to people aged 15 years and over and excludes the following people:

- members of the permanent defence forces;
- certain diplomatic personnel of overseas governments, customarily excluded from the Census and estimated populations;
- overseas residents in Australia; and
- members of non-Australian defence forces (and their dependants).

5 Students at boarding schools, patients in hospitals, residents of homes (e.g. retirement homes, homes for people with disabilities), and inmates of prisons are excluded from all supplementary surveys.

6 This supplementary survey was conducted in both urban and rural areas in all states and territories, but excluded people living in Indigenous communities in very remote parts of Australia.

COVERAGE

7 The estimates in this publication relate to people covered by the survey in September 2012. In the LFS, coverage rules are applied which aim to ensure that each person is associated with only one dwelling and hence has only one chance of selection in the survey. See *Labour Force, Australia* (cat. no. 6202.0) for more details.

SAMPLE SIZE

8 Supplementary surveys are not conducted on the full LFS sample. Since August 1994 the sample for supplementary surveys has been restricted to no more than seven-eighths of the LFS sample.

9 The initial sample for the September 2012 LFS consisted of 36,897 private dwelling households and special dwelling units. Of the 29,735 private dwelling households and special dwelling units that remained in the survey after sample loss (e.g. households selected in the survey which had no residents in scope for the LFS, vacant or derelict dwellings and dwellings under construction), approximately 28,162 or 94.7% fully responded to the Persons Not in the Labour Force Survey. The number of completed interviews obtained from these private dwelling households and special dwelling units (after taking into account scope, coverage and subsampling exclusions) was 16,038.

RELIABILITY OF THE ESTIMATES

10 Estimates in this publication are subject to sampling and non-sampling errors:

- Sampling error is the difference between the published estimate and the value that would have been produced if all dwellings had been included in the survey. For more information, see the Technical Note.

EXPLANATORY NOTES *continued*

RELIABILITY OF THE ESTIMATES *continued*

- Non-sampling errors are inaccuracies that occur because of imperfections in reporting by respondents and interviewers, and errors made in coding and processing data. These inaccuracies may occur in any enumeration, whether it be a full count or a sample. Every effort is made to reduce the non-sampling error to a minimum by careful design of questionnaires, intensive training and supervision of interviewers, and efficient processing procedures.

SEASONAL FACTORS

11 The estimates are based on information collected in the survey month, and, due to seasonal factors, may not be representative of other months of the year.

CLASSIFICATIONS USED

12 Occupation data are classified according to the *ANZSCO – Australian and New Zealand Standard Classification of Occupations, First Edition, Revision 1*, (cat. no. 1220.0).

13 Country of birth data are classified according to the *Standard Australian Classification of Countries (SACC), Second Edition* (cat. no. 1269.0).

COMPARABILITY OF TIME SERIES

14 The Labour Force Survey estimates, and estimates from the supplementary surveys, are calculated in such a way as to sum to independent estimates of the civilian population aged 15 years and over (population benchmarks). These population benchmarks are based on Estimated Resident Population (ERP) data. Generally, revisions are made to population benchmarks for the LFS following the final rebasing of population estimates to the latest five-yearly Census of Population and Housing, or when the need arises.

15 From February 2009 Labour Force Estimates have been compiled using population benchmarks based on the 2006 Census of Population and Housing. Revisions were applied to the LFS population benchmarks in July 2010 and December 2012 to take into account the latest available population estimates. The latest revision undertaken in December 2012 is not reflected in the estimates presented in this issue.

16 Changes to the LFS population benchmarks impact primarily on the magnitude of the Labour Force Survey estimates (i.e. employment and unemployment) that are directly related to the underlying size of the population. For more details on population benchmarks, see the Explanatory Notes in *Labour Force, Australia* (cat. no. 6202.0), and for details about the revisions made, see the article in the November 2012 issue of *Labour Force, Australia* (cat. no. 6202.0) and the article in the September 2010 issue of *Labour Force, Australia* (cat. no. 6202.0).

COMPARABILITY WITH PREVIOUS SURVEYS

17 Persons Not in the Labour Force Surveys conducted up to and including September 1987 included all people aged 15 years and over. From September 1988 to September 2004, the survey excluded all people aged 70 years and over.

18 The scope of the Persons Not in the Labour Force Survey was expanded in September 2005 to include all people aged 15 years and over. This change resulted in about 1.6 million extra people coming within the scope of this survey. Users need to exercise caution when comparing the estimates prior to 2005 with subsequent years. Direct comparisons should only be made where the same age ranges are applied.

19 From September 2006, estimates of the number of people not in the labour force because they were caring for children include people whose youngest child was aged 12 years and under. Previously questions relating to the care of children were only asked of people with children aged 11 years and under. This change was made to ensure consistency with other ABS surveys. Users need to exercise care when comparing the estimates in Table 9 of this publication with publications prior to September 2006.

EXPLANATORY NOTES *continued*

COMPARABILITY WITH PREVIOUS SURVEYS *continued*

20 Following a review of the Persons Not in the Labour Force Survey, a number of changes were implemented in the 2007 cycle. Users need to exercise caution when comparing estimates from 2007 with previous years' data. The changes are documented in the following paragraphs 21 to 24.

21 Between September 2001 and September 2006, people who reported in the LFS that they were 'Permanently not intending to work' were not asked questions about wanting to work and looking for work in the Persons Not in the Labour Force Survey. As such, these people were classified as 'Did not want to work'. It is likely, however, that if they had been asked these questions, then some of these people may have been classified differently and may have been included in one of the 'Wanted to work' categories. From September 2007, people who specified that they were 'Permanently not intending to work' were asked questions about wanting to work and looking for work. As a result of this change, there has been a break in time series.

22 Prior to September 2007, the data items, 'All reasons for not actively looking for work', 'Main reason for not actively looking for work' and 'Main reason not available to start work within four weeks' included the category 'Own ill health, physical disability or pregnancy'. From September 2007, this category has been split into three separate categories: 'Own short-term illness or injury', 'Own long-term health condition or disability' and 'Pregnancy'.

23 Prior to September 2007, the data items, 'Reason for ceasing last job' and 'Main activity when not in the labour force' included the categories 'Own ill-health or injury' and 'Own disability or handicap'. From September 2007, these categories were renamed to ensure they were consistent with those in other data items and have been collected as 'Own short-term illness or injury' and 'Own long-term health condition or disability' respectively. While the way interviewers were instructed to code the responses to the relevant categories did not conceptually change, the renaming has caused a break in time series.

24 From September 2007, a new data item, 'All reasons not available to start work within four weeks', has been collected in addition to 'Main reason not available to start work within four weeks'.

25 Prior to September 2008, the data item 'Main activity when not in the labour force' included the category 'Home duties or caring for children'. From September 2008, this category has been split into two separate categories, 'Home duties' and 'Caring for children'. Care should be taken in interpreting the data in these categories because some people with young children indicated that 'Home duties' was their main activity when not in the labour force, rather than 'Caring for children'.

26 From September 2009, a new response category, 'Believes ill-health or disability discourages employers' has been included in the data items 'Main reason not actively looking for work' and 'All reasons not actively looking for work'. This category is not presented in this publication, however, is available on request.

27 From September 2009, 'Believes ill-health or disability discourages employers' together with 'No jobs in suitable hours' are now included with other responses to derive the population group 'Discouraged job seekers'. Prior to September 2009, 'No jobs in suitable hours' was included in the category 'Other'. As a result of this change, there is a break in time series and users need to exercise care when comparing estimates from 2009 with previous years' data. The following table compares categories affected by the changes in 2008 and 2009.

EXPLANATORY NOTES *continued*

COMPARABILITY WITH
PREVIOUS SURVEYS *continued*

PERSONS WITH MARGINAL ATTACHMENT NOT ACTIVELY LOOKING FOR
WORK

	2010		2009		2008	
	'000	%	'000	%	'000	%
Discouraged job seekers	102.1	12.0	111.8	14.9	73.9	9.9
Believes ill health or disability discourages employers (from 2009)	*2.9	*0.3	*5.8	*0.8	—	—
No jobs in suitable hours (from 2009)	10.1	1.2	10.5	1.4	—	—
Other	748.9	88.0	711.6	94.9	676.1	90.1
Personal reasons	373.4	43.9	348.3	46.4	323.5	43.1
Family reasons	242.4	28.5	231.7	30.9	226.7	30.2
No jobs in suitable hours (prior to 2008)	—	—	—	—	*7.6	*1.0
Other reasons	63.9	7.5	64.8	8.6	61.8	8.2
Had a job to go to	59.6	7.0	52.5	7.0	47.0	6.3
Did not know	9.5	1.1	14.2	1.9	9.6	1.3
Total	851.0	100.0	823.4	100.0	750.0	100.0

* estimate is subject to sampling variability too high for most practical purposes
— nil or rounded to zero (including null cells)

28 From September 2009, the method used to determine whether a respondent prefers full-time or part-time work has changed. In 2009, respondents were asked the number of hours they would prefer to work, whereas in previous years, they were asked whether they would prefer to work full-time or part-time. A new data item 'Preferred number of hours' is also now available. Both data items apply only to people who intend to enter the labour force in the next 12 months. As a result of this change, there is a break in time series and users need to exercise care when comparing the estimates in Table 5 of this publication with publications prior to September 2009.

COMPARABILITY WITH
MONTHLY LFS STATISTICS

29 Due to differences in the scope and sample size of this supplementary survey and that of the LFS, the estimation procedure may lead to some small variations between labour force estimates from this survey and those from the LFS.

PREVIOUS SURVEYS

30 The Persons Not in the Labour Force Survey was first conducted in May 1975 and again in May 1977. From 1979 to 1987 the survey was collected twice a year (March and September). Since then it has been conducted annually in September. Results of previous surveys were published in:

- *Persons Not in the Labour Force, Australia* (cat. no. 6220.0); and
- standard data service *Persons Not in the Labour Force, Australia* (cat. no. 6220.0.40.001) for 1994 and 1995 (available in hardcopy only).

ACKNOWLEDGMENT

31 ABS publications draw extensively on information provided freely by individuals, businesses, governments and other organisations. Their continued cooperation is very much appreciated; without it, the wide range of statistics published by the ABS would not be available. Information received by the ABS is treated in strict confidence as required by the *Census and Statistics Act, 1905*.

PRODUCTS AND SERVICES
Spreadsheets

32 Additional tables with time series data are released in spreadsheet format. These tables are available from the ABS website.

EXPLANATORY NOTES *continued*

RELATED PUBLICATIONS

33 ABS publications which may be of interest include:

- *Australian Labour Market Statistics* (cat. no. 6105.0);
- *Barriers and Incentives to Labour Force Participation, Australia* (cat. no. 6239.0);
- *Job Search Experience, Australia* (cat. no. 6222.0);
- *Labour Statistics: Concepts, Sources and Methods* (cat. no. 6102.0.55.001);
- *Underemployed Workers, Australia* (cat. no. 6265.0);
- *Labour Force, Australia* (cat. no. 6202.0); and
- *Microdata: Longitudinal Labour Force, Australia, 2008–2010* (cat. no. 6602.0).

34 Current publications and other products released by the ABS are available from the Statistics Page on the ABS website. The ABS also issues a daily Release Advice on the website which details products to be released in the week ahead.

APPENDIX 1 POPULATIONS AND DATA ITEMS LIST

DATA AVAILABLE ON REQUEST

The ABS has a range of data available on request from the Persons Not in the Labour Force Survey. This section lists the data items and populations which relate to the survey. More detailed breakdowns of some data items may also be available on request.

The population(s) for a particular data item refers to the person in the survey to whom the data item relates. Where alternative output categories are available for the same data item, these are shown and the data item name is followed by bracketed numeral (e.g. Country of birth (2)).

For more information about ABS data available on request, contact National Information and Referral Service in Canberra on 1300 135 070 or via email to <client.services@abs.gov.au> or contact Labour Supplementary Survey Section on (02) 6252 7206 or via email to <labour.statistics@abs.gov.au>.

<i>Population 1:</i>	Persons not in the labour force
<i>Population 2:</i>	Persons not in the labour force who wanted to work
<i>Population 3:</i>	Persons not in the labour force with marginal attachment to the labour force
<i>Population 4:</i>	Persons not in the labour force who wanted to work but were not actively looking for work and were available to start work within four weeks
<i>Population 5:</i>	Persons not in the labour force who were discouraged job seekers
<i>Population 6:</i>	Persons not in the labour force who wanted to work but were not actively looking for work and were not available to start work within four weeks
<i>Population 7:</i>	Persons not in the labour force because they were caring for children, who wanted to work but not actively looking for work
<i>Population 8:</i>	Persons not in the labour force who previously had a job
<i>Population 9:</i>	Persons not in the labour force without marginal attachment to the labour force
<i>Population 10:</i>	Persons not in the labour force whose last job was less than 20 years ago

APPENDIX 1 POPULATIONS AND DATA ITEMS LIST *continued*

<i>Data items</i>	<i>Populations</i>
1 State or territory of usual residence	All
New South Wales	
Victoria	
Queensland	
South Australia	
Western Australia	
Tasmania	
Northern Territory	
Australian Capital Territory	
2 Area of usual residence	All
State capital city	
Balance of state/territory	
3 Region of usual residence	All
Standard labour force dissemination regions	
4 Sex	All
Males	
Females	
5 Social marital status	All
Married	
Not married	
6 Relationship in household	All
Family member	
Husband, wife or partner	
With dependants	
Without dependants	
Lone parent	
With dependants	
Without dependants	
Dependent student	
Non-dependent child	
Other related individual	
Non-family member	
Lone person	
Not living alone	
Relationship not determined	
7A Country of birth and period of arrival	All
Born in Australia	
Born overseas	
Arrived before 1971	
Arrived 1971–1980	
Arrived 1981–1990	
Arrived 1991–2000	
Arrived 2001–2010	
Arrived 2011 to survey date	
7B Country of birth (1)	All
Born in Australia	
Born overseas	
Born in main English-speaking countries	
Born in other than main English-speaking countries	
7C Country of birth (2)	All
Born in Australia	
Born overseas	
Oceania and Antarctica	
North-West Europe	
Southern and Eastern Europe	
North Africa and the Middle East	
South-East Asia	
North-East Asia	
Southern and Central Asia	
Americas	
Sub-Saharan Africa	

APPENDIX 1 POPULATIONS AND DATA ITEMS LIST *continued*

<i>Data items</i>	<i>Populations</i>
8 Age group (years)	All
15–19	
20–24	
25–34	
35–44	
45–54	
55–59	
60–64	
65–69	
70 and over	
Note: Age collected in single years	
9 Full-time study status (15–24 year olds)	All
Full-time students	
Not full-time students	
Did not know	
10A Persons not in the labour force summary variable	1, 8, 10
With marginal attachment to the labour force	
Wanted to work and were actively looking for work	
Were available to start work within four weeks	
Were not available to start work within four weeks	
Wanted to work but were not actively looking for work and were available to start work within four weeks	
Discouraged job seekers	
Other	
Without marginal attachment to the labour force	
Wanted to work but were not actively looking for work and were not available to start work within four weeks	
Did not want to work (including did not know)	
Permanently unable to work	
10B Marginal attachment summary variable	3
Wanted to work and were actively looking for work	
Were available to start work within four weeks	
Were not available to start work within four weeks	
Wanted to work but were not actively looking for work and were available to start work within four weeks	
Discouraged job seekers	
Other	
11 Whether wanted to work	1, 8, 10
Wanted to work	
Might want to work	
Did not want to work	
Did not know	
Permanently unable to work	
12 Whether looked for work in the last 12 months	All
Had looked for work	
Less than 5 weeks ago	
5 weeks and less than 8 weeks ago	
8 weeks and less than 13 weeks ago	
13–52 weeks ago	
13 weeks and less than 26 weeks ago	
26 weeks and less than 39 weeks ago	
39–52 weeks ago	
Had not looked for work	
13 Main activity when not in the labour force	All
Retired or voluntarily inactive	
Home duties	
Caring for children	
Attending an educational institution	
Own long-term health condition or disability	
Own short-term illness or injury	
Looking after ill or disabled person	
Travel, holiday or leisure activity	
Working in unpaid voluntary job	
Other	

APPENDIX 1 POPULATIONS AND DATA ITEMS LIST *continued*

<i>Data items</i>	<i>Populations</i>
14A Time since last job	All
Had a job	
Under 12 months	
1 week and under 4 weeks	
4 weeks and under 8 weeks	
8 weeks and under 13 weeks	
13 weeks and under 26 weeks	
26 weeks and under 39 weeks	
39 weeks and under 52 weeks	
1 year and under 3 years	
3 years and under 10 years	
3 years and under 5 years	
5 years and under 10 years	
10 years or more	
10 years and under 20 years	
20 years or more	
Never had a job	
14B Whether had a job in the last 20 years	All
Had a job	
Last job less than 20 years ago	
Last job 20 or more years ago	
Never had a job	
15 Reason for ceasing last job	All
Had a job	
Lost a job	
Retrenched, made redundant, employer went out of business, dismissed, no work was available	
Job was temporary or seasonal	
Own short-term illness or injury	
Own business closed down for economic reasons	
Left a job	
Unsatisfactory work arrangements	
Retired, did not work any longer	
Own long-term health condition or disability	
Returned to studies	
Pregnancy or to have children	
To get married	
To look after family, house or someone else	
To have holidays, moved house or spouse transferred	
Own business closed down for other than economic reasons	
Other	
Never had a job	
16 Occupation in last job	All
Last job less than 20 years ago	
Managers	
Professionals	
Technicians and trades workers	
Community and personal service workers	
Clerical and administrative workers	
Sales workers	
Machinery operators and drivers	
Labourers	
Last job 20 or more years ago	
Never had a job	
17A Status in employment in last job (1)	All
Last job less than 20 years ago	
Employer	
Own account worker	
Employee	
Contributing family worker	
Unpaid voluntary worker	
Last job 20 or more years ago	
Never had a job	

APPENDIX 1 POPULATIONS AND DATA ITEMS LIST *continued*

<i>Data items</i>	<i>Populations</i>
17B Status in employment in last job (2)	All
Last job less than 20 years ago	
Employee	
Own account worker/Employer	
Other	
Last job 20 or more years ago	
Never had a job	
18 Full-time or part-time status in last job	All
Last job less than 20 years ago	
Full-time	
Part-time	
Varied/Did not know	
Last job 20 or more years ago	
Never had a job	
19A Intention to enter the labour force	All
Intends to enter	
Might enter	
Does not intend to enter	
Does not know	
Permanently unable to work	
19B Intention to enter the labour force in the next 12 months	All
Intends to enter	
Might enter	
Does not intend to enter	
Does not know	
Permanently unable to work	
20 Full-time or part-time preference	All
Full-time	
Part-time	
Did not know	
Not intending to work	
21 Main reason for not actively looking for work	4
Wanted to work but were not actively looking for work and were available to start work within four weeks	
Discouraged job seekers	
Considered too young by employers	
Considered too old by employers	
Believes ill health or disability discourages employers	
Lacked the necessary schooling, training, skills or experience	
Difficulties because of language or ethnic background	
No jobs in locality or line of work	
No jobs in suitable hours	
No jobs at all	
Other	
Personal reasons	
Own short-term illness or injury	
Own long-term health condition or disability	
Pregnancy	
Attending an educational institution	
Had no need to work	
Welfare payments or pension may be affected	
Moved house or holidays	
Family reasons	
Ill health of other than self	
Caring for children	
No child care in locality	
No child care available at all	
Cost or too expensive	
Booked out or no places available	
Children too young or too old	
Prefers to look after children	
Quality of child care unsuitable	
Other reasons	

APPENDIX 1 POPULATIONS AND DATA ITEMS LIST *continued*

<i>Data items</i>	<i>Populations</i>
21 Main reason for not actively looking for work <i>cont.</i> Wanted to work but were not actively looking for work and were available to start work within four weeks <i>cont.</i> Other <i>cont.</i> Family reasons <i>cont.</i> Other family considerations Other reasons Had a job to go to Did not know	4
22 All reasons for not actively looking for work Discouraged job seekers Considered too young by employers Considered too old by employers Believes ill health or disability discourages employers Lacked the necessary schooling, training, skills or experience Difficulties because of language or ethnic background No jobs in locality or line of work No job in suitable hours No jobs at all Other Personal reasons Own short-term illness or injury Own long-term health condition or disability Pregnancy Attending an educational institution Had no need to work Welfare payments or pension may be affected Moved house or holidays Family reasons Ill health of other than self Caring for children Other family considerations Other reasons Had a job to go to Did not know	4
23 Main reason not working due to caring for children No child care in locality No child care available at all Cost or too expensive Booked out or no places available Children too young or too old Prefers to look after children Quality of child care unsuitable Other child care reasons	7
24 Main reason not available to start work within four weeks Personal reasons Own short-term illness or injury Own long-term health condition or disability Pregnancy Studying or returning to studies Moved house or holidays Family reasons Ill health of other than self Unable to find suitable child care Children too young or preferred to look after children On a job-related training program Other reasons	6

APPENDIX 1 POPULATIONS AND DATA ITEMS LIST *continued*

<i>Data items</i>	<i>Populations</i>
25 All reasons not available to start work within four weeks	6
Personal reasons	
Own short-term illness or injury	
Own long-term health condition or disability	
Pregnancy	
Studying or returning to studies	
Moved house or holidays	
Family reasons	
Ill health of other than self	
Caring for children	
On a job-related training program	
Other reasons	
26 Age of youngest child	7
0–2 years	
3–4 years	
5 years	
6–9 years	
10–12 years	
27 Number of children	7
Aged 0–2 years	
Aged 3–4 years	
Aged 5 years	
Aged 6–9 years	
Aged 10–12 years	
28 Preferred number of hours	All
1–15 hours	
16–29 hours	
30–34 hours	
35–39 hours	
40 hours	
41–44 hours	
45–48 hours	
49 hours or more	
Did not know	
Not intending to work	

APPENDIX 2 SUPPLEMENTARY SURVEYS LIST

SUPPLEMENTARY SURVEYS

The Monthly Population Survey program and Multi-Purpose Household Survey program collect data on particular aspects of the labour force. The following is an historical list of labour surveys collected in these programs. Data from these surveys are available on request and can be obtained by contacting the ABS.

	<i>cat. no.</i>	<i>Frequency</i>	<i>Latest issue</i>
Monthly Population Supplementary Surveys			
Characteristics of Recent Migrants, Australia(a)	6250.0	Irregular	November 2010
Child Employment, Australia	6211.0	Irregular	June 2006
Childhood Education and Care, Australia	4402.0	Irregular	June 2011
Education and Work, Australia	6227.0	Annual	May 2012
Employee Earnings, Benefits, and Trade Union Membership, Australia	6310.0	Annual	August 2011
Forms of Employment, Australia	6359.0	Annual	November 2011
Job Search Experience, Australia	6222.0	Annual	July 2012
Labour Force Experience, Australia	6206.0	Biennial	February 2011
Labour Mobility, Australia	6209.0	Biennial	February 2012
Locations of Work, Australia	6275.0	Irregular	November 2008
Multiple Jobholding, Australia(b)	6216.0	Irregular	August 1997
Persons Not in the Labour Force, Australia	6220.0	Annual	September 2012
Pregnancy and Employment Transitions, Australia	4913.0	Irregular	November 2011
Underemployed Workers, Australia	6265.0	Annual	September 2012
Working Time Arrangements, Australia(c)	6342.0	Irregular	November 2009
Multi-Purpose Household Surveys			
Barriers and Incentives to Labour Force Participation, Australia	6239.0	Biennial	2010–2011
Retirement and Retirement Intentions, Australia	6238.0	Biennial	2010–2011
Work-Related Injuries, Australia	6324.0	Irregular	2009–2010

- (a) This product replaces the publication Labour Force Status and Other Characteristics of Migrants, Australia (cat. no. 6250.0).
- (b) Latest data available on request July 2001 or see Employment Arrangements, Retirement and Superannuation, Australia, Apr to Jul 2007 (Re-issue) (cat. no. 6361.0).
- (c) This product replaces the publication Working Arrangements, Australia (cat. no. 6342.0).

TECHNICAL NOTE DATA QUALITY

INTRODUCTION

1 Since the estimates in this publication are based on information obtained from occupants of a sample of dwellings, they are subject to sampling variability. That is, they may differ from those estimates that would have been produced if all dwellings had been included in the survey. One measure of the likely difference is given by the standard error (SE), which indicates the extent to which an estimate might have varied by chance because only a sample of dwellings was included. There are about two chances in three (67%) that a sample estimate will differ by less than one SE from the number that would have been obtained if all dwellings had been included, and about 19 chances in 20 (95%) that the difference will be less than two SEs. Another measure of the likely difference is the relative standard error (RSE), which is obtained by expressing the SE as a percentage of the estimate.

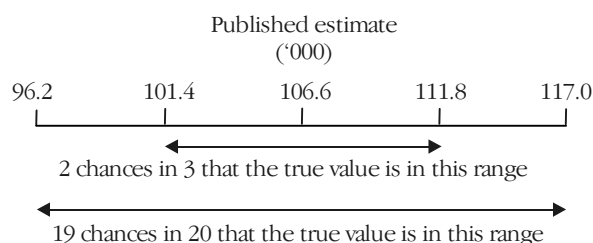
2 Due to space limitations, it is impractical to print the SE of each estimate in the publication. Instead, a table of SEs is provided to enable readers to determine the SE for an estimate from the size of that estimate (see table T1). The SE table is derived from a mathematical model, referred to as the 'SE model', which is created using data from a number of past Labour Force Surveys. It should be noted that the SE model only gives an approximate value for the SE for any particular estimate since there is some minor variation between SEs for different estimates of the same size.

CALCULATION OF STANDARD ERROR

3 An example of the calculation and the use of SEs in relation to estimates of persons is as follows. Table 1 shows that the estimated number of people in Australia who were discouraged job seekers was 106,600. Since the estimate is between 100,000 and 150,000, table T1 shows that the SE for Australia will lie between 5,100 and 6,050 and can be approximated by interpolation using the following general formula:

$$\begin{aligned}
 & SE \text{ of estimate} \\
 &= \text{lower SE} + \left(\left(\frac{\text{size of estimate} - \text{lower estimate}}{\text{upper estimate} - \text{lower estimate}} \right) \times (\text{upper SE} - \text{lower SE}) \right) \\
 &= 5,100 + \left(\left(\frac{106,600 - 100,000}{150,000 - 100,000} \right) \times (6,050 - 5,100) \right) \\
 &= 5,200 \text{ (rounded to the nearest 100)}
 \end{aligned}$$

4 Therefore, there are about two chances in three that the value that would have been produced if all dwellings had been included in the survey will fall within the range 101,400 to 111,800 and about 19 chances in 20 that the value will fall within the range 96,200 to 117,000. This example is illustrated in the following diagram.



5 In general, the size of the SE increases as the size of the estimate increases. Conversely, the RSE decreases as the size of the estimate increases. Very small estimates are thus subject to such high RSEs that their value for most practical purposes is unreliable. In the tables in this publication, only estimates with RSEs of 25% or less are considered reliable for most purposes. Estimates with RSEs greater than 25% but less than or equal to 50% are preceded by an asterisk (e.g.*3.2) to indicate they are subject to high SEs and should be used with caution. Estimates with RSEs of greater than 50%, preceded by a double asterisk (e.g.**0.4), are considered too unreliable for general use

CALCULATION OF STANDARD ERROR *continued*

and should only be used to aggregate with other estimates to provide derived estimates with RSEs of less than 25%.

PROPORTIONS AND PERCENTAGES

6 Proportions and percentages formed from the ratio of two estimates are also subject to sampling errors. The size of the error depends on the accuracy of both the numerator and the denominator. A formula to approximate the RSE of a proportion is given below. This formula is only valid when x is a subset of y.

$$RSE\left(\frac{x}{y}\right) = \sqrt{[RSE(x)]^2 - [RSE(y)]^2}$$

7 Considering the example from paragraph 3, of the 106,600 people who were discouraged job seekers, 56,300 or 52.8% were females. The SE of 56,300 may be calculated by interpolation as 4,000. To convert this to an RSE we express the SE as a percentage of the estimate, or 4,000/56,300=7.1%. The SE for 106,600 was calculated previously as 5,200 which converted to an RSE is 5,200/106,600=4.9%. Applying the above formula, the RSE of the proportion is:

$$RSE = \sqrt{(7.1)^2 - (4.9)^2} = 5.1\%$$

8 Therefore, the SE for the proportion of discouraged job seekers who were females is 2.7 percentage points (= (52.8/100)x5.1). Therefore, there are about two chances in three that the proportion of females who were discouraged job seekers was between 50.1% and 55.5% and 19 chances in 20 that the proportion is within the range 47.4% to 58.2%.

DIFFERENCES

9 Published estimates may also be used to calculate the difference between two survey estimates (of numbers or percentages). Such an estimate is subject to sampling error. The sampling error of the difference between two estimates depends on their SEs and the relationship (correlation) between them. An approximate SE of the difference between two estimates (x-y) may be calculated by the following formula:

$$SE(x-y) = \sqrt{[SE(x)]^2 + [SE(y)]^2}$$

10 While this formula will only be exact for differences between separate and uncorrelated characteristics or subpopulations, it is expected to provide a good approximation for all differences likely to be of interest in this publication.

TECHNICAL NOTE DATA QUALITY *continued*

STANDARD ERRORS

T1 STANDARD ERRORS OF ESTIMATES

Size of Estimate (persons)	NSW	Vic.	Qld.	SA	WA	Tas.	NT	ACT	SE	RSE
	no.	no.	no.	no.	no.	no.	no.	no.	no.	%
100	160	170	150	150	160	110	90	90	110	110.0
200	270	270	240	220	240	160	130	160	200	100.0
300	350	340	310	280	310	200	150	200	270	90.0
500	470	460	430	360	410	250	190	270	390	78.0
700	580	560	520	420	490	290	230	320	490	70.0
1,000	710	680	640	490	580	340	270	370	620	62.0
1,500	880	830	800	590	700	400	330	430	790	52.7
2,000	1 030	960	930	670	800	440	380	470	930	46.5
2,500	1 150	1 050	1 050	750	900	500	450	500	1 050	42.0
3,000	1 250	1 150	1 150	800	950	500	450	500	1 150	38.3
3,500	1 350	1 250	1 200	850	1 000	550	500	550	1 250	35.7
4,000	1 450	1 350	1 300	900	1 050	550	550	550	1 350	33.8
5,000	1 600	1 450	1 400	1 000	1 150	600	650	650	1 550	31.0
7,000	1 850	1 700	1 650	1 100	1 350	700	850	750	1 800	25.7
10,000	2 150	1 950	1 900	1 250	1 500	850	1 150	950	2 100	21.0
15,000	2 500	2 300	2 200	1 500	1 750	1 050	1 600	1 250	2 500	16.7
20,000	2 800	2 550	2 400	1 700	2 000	1 250	2 050	1 500	2 800	14.0
30,000	3 200	2 900	2 750	2 100	2 500	1 550	2 800	1 850	3 250	10.8
40,000	3 550	3 200	3 150	2 450	3 000	1 750	3 450	2 050	3 550	8.9
50,000	3 850	3 550	3 500	2 750	3 400	2 000	4 000	2 200	3 850	7.7
100,000	5 400	5 100	5 100	3 900	5 000	2 700	6 250	2 500	5 100	5.1
150,000	6 850	6 550	6 450	4 700	6 150	3 250	7 850	2 500	6 050	4.0
200,000	8 200	7 800	7 600	5 350	7 050	3 650	6 950	3.5
300,000	10 350	9 900	9 300	6 300	8 500	4 250	8 450	2.8
500,000	13 350	13 300	11 800	7 550	10 500	5 050	11 050	2.2
1,000,000	17 850	19 600	15 450	9 400	13 600	16 350	1.6
2,000,000	22 250	28 350	19 200	11 200	16 950	23 700	1.2
5,000,000	26 700	45 150	23 500	34 200	0.7
10,000,000	28 300	63 050	41 050	0.4
15,000,000	44 050	0.3

.. not applicable

T2 LEVELS AT WHICH ESTIMATES HAVE A RELATIVE STANDARD ERRORS OF 25% AND 50% (a)

	NSW	Vic.	Qld	SA	WA	Tas.	NT	ACT	Australia
Percentage	no.	no.	no.	no.	no.	no.	no.	no.	no.
RSE of 25%	7 700	6 600	6 300	3 300	4 500	1 700	1 200	1 800	7 300
RSE of 50%	2 100	1 800	1 700	1 000	1 300	500	300	600	1 700

(a) Refers to the number of people contributing to the estimate

GLOSSARY

Actively looking for work	People who were taking active steps to find work. Active steps comprise: <ul style="list-style-type: none">■ writing, telephoning or applying to an employer for work;■ answering an advertisement for a job;■ checking noticeboards;■ being registered with Centrelink as a jobseeker;■ checking or registering with any other employment agency;■ advertising or tendering for work; and■ contacting friends or relatives.
Age of youngest child	Age of the youngest child, 12 years and under, in the household.
Available to start work within four weeks	People who were available to start work within four weeks or, for people with children aged 12 years and under, could start work within four weeks if suitable child care was available.
Civilian population	All usual residents of Australia aged 15 years and over except members of the permanent defence force, certain diplomatic personnel of overseas governments customarily excluded from Census of Population and Housing and estimated resident population counts, overseas residents in Australia, and members of non-Australian defence forces (and their dependants) stationed in Australia.
Contributing family workers	Persons who work without pay in an economic enterprise operated by a relative.
Did not want to work	People who were not classified as employed or unemployed who answered 'no' when asked if they would like a job.
Discouraged job seekers	People with marginal attachment to the labour force who wanted to work and were available to start work within the next four weeks but whose main reason for not actively looking for work was that they believed they would not find a job for any of the following reasons: <ul style="list-style-type: none">■ considered to be too young by employers;■ considered to be too old by employers;■ believes ill health or disability discourages employers;■ lacked necessary schooling, training, skills or experience;■ difficulties because of language or ethnic background;■ no jobs in their locality or line of work;■ no jobs in suitable hours; and■ no jobs at all.
Employed	People aged 15 years and over who, during the reference week: <ul style="list-style-type: none">■ worked for one hour or more for pay, profit, commission or payment in kind in a job or business, or on a farm (comprising employees, employers and own account workers); or■ worked for one hour or more without pay in a family business or on a farm (i.e. contributing family workers); or■ were employees who had a job but were not at work and were:<ul style="list-style-type: none">■ away from work for less than four weeks up to the end of the reference week; or■ away from work for more than four weeks up to the end of the reference week and received pay for some or all of the four week period to the end of the reference week; or■ away from work as a standard work or shift arrangement; or■ on strike or locked out; or■ on workers' compensation and expected to return to their job; or■ were employers or own account workers who had a job, business or farm, but were not at work.

GLOSSARY *continued*

Family	Two or more people, one of whom is at least 15 years of age, who are related by blood, marriage (registered or de facto), adoption, step or fostering; and who are usually resident in the same household. The basis of a family is formed by identifying the presence of a couple relationship, lone parent-child relationship or other blood relationship. Some households will, therefore, contain more than one family.
Family reasons for not actively looking for work	Includes ill health of someone other than themselves, caring for children and other family considerations.
Full-time preference	People who preferred to work 35 hours or more a week. For this survey, full-time preference is derived by applying data collected on respondents' preferred number of hours to those who intended to or might enter the labour force in the next 12 months.
Full-time or part-time status of last job	The perception of people of whether they worked full-time or part-time in their last job.
Future starters	People waiting to start, within four weeks of the end of the reference week, a new job that they have already obtained (and could have started in the reference week if the job had been available then). Under International Labour Organisation (ILO) guidelines, these persons do not have to be actively looking for work to be classified as unemployed.
Had a job to go to	People who were waiting to start a job, but would not be starting within four weeks. Also includes people who had a job but, up to the end of the reference week, had been away from work without pay for four weeks or longer and had not been actively looking for work.
Intention to enter the labour force in the next 12 months	The intention of people to work or look for work in the 12 months following the interview.
Job	Any paid employment, full-time or part-time, lasting two weeks or more.
Labour force	The civilian population is split into two mutually exclusive groups: the labour force (employed and unemployed people) and persons not in the labour force. The definitions conform closely to the international standard definitions adopted by the International Conferences of Labour Statisticians.
Left a job	People who are classified as voluntarily ceasing their last job.
Lost a job	People who are classified as involuntarily ceasing their last job.
Main activity when not in the labour force	The main activity of people who are not in the labour force since they last worked or looked for work (or in the last 12 months if they haven't worked in the last year).
Marginal attachment to the labour force	<p>People who were not in the labour force in the reference week, wanted to work and:</p> <ul style="list-style-type: none"> ■ were actively looking for work but did not meet the availability criterion to be classified as unemployed; or ■ were not actively looking for work but were available to start work within four weeks. <p>The criteria for determining those in the labour force are based on activity (i.e. working or looking for work) and availability to start work during the reference week. The criteria associated with marginal attachment to the labour force, in particular the concepts of wanting to work and reasons for not actively looking for work, are more subjective. Hence, the measurement against these criteria is affected by the respondent's own interpretation of the concepts used. An individual respondent's interpretation may be affected by their work aspirations, as well as family, economic and other commitments.</p> <p>For more information see article <i>Understanding the Australian Labour Force Using ABS Statistics in Labour Force, Australia</i> (6202.0).</p>
Main English-speaking countries	The list of main English-speaking countries provided here is not an attempt to classify countries on the basis of whether or not English is the predominant or official language of each country. It is a list of the main countries from which Australia receives, or has received, significant numbers of overseas settlers who are likely to speak English. These

GLOSSARY *continued*

Main English-speaking countries <i>continued</i>	countries comprise the United Kingdom, the Republic of Ireland, New Zealand, Canada, South Africa and the United States of America.
Occupation of last job	An occupation is a collection of jobs that are sufficiently similar in their title and tasks, skill level and skill specialisation which are grouped together for the purposes of classification. In this publication, occupation refers to Major Group as defined by ANZSCO – <i>Australian and New Zealand Standard Classification of Occupations, First Edition, Revision 1</i> (cat. no. 1220.0) and relates to persons who have had a job less than 20 years ago only.
Part-time preference	People who preferred to work one to 34 hours a week. For this survey, part-time preference is derived by applying data collected on respondents' preferred number of hours to those who intended to or might enter the labour force in the next 12 months.
Permanently not intending to work	People aged 65 years and over who said they were permanently not intending to work.
Permanently unable to work	This category is used only if a respondent, or a person answering on their behalf, volunteers that he/she or another member of the household is permanently unable to work.
Personal reasons for not actively looking for work	Includes 'own short-term illness or injury' or 'long-term health condition or disability', 'pregnancy', 'attending an educational institution', 'had no need to work', 'welfare payments or pension may be affected', and 'moved house or on holidays'.
Persons in the labour force	People who were classified as being in the labour force, that is, either employed or unemployed.
Persons not in the labour force	People who were not in the categories 'employed' or 'unemployed' as defined.
Persons not in the labour force because they were caring for children, who wanted to work but not actively looking for work	People who wanted to work and: <ul style="list-style-type: none">■ were not actively looking for work because they were caring for children, but were available to start work within four weeks; or■ were not actively looking for work and reported that they were not available to start work within four weeks because they were caring for children.
Preferred number of hours	The number of hours people, who intend to enter the labour force in the next 12 months, would like to work each week.
Reference week	The week preceding the week in which the interview was conducted.
Status in employment of last job	People who had a job in the last 20 years classified by whether they were employees, employers, own account workers, contributing family workers or unpaid voluntary workers in their last job.
Time since last job	The elapsed time since ceasing the last job.
Unemployed	People aged 15 years and over who were not employed during the reference week, and: <ul style="list-style-type: none">■ had actively looked for full-time or part-time work at any time in the four weeks up to the end of the reference week and were available for work in the reference week; or■ were waiting to start a new job within four weeks from the end of the reference week and could have started in the reference week if the job had been available then.
Wanted to work	People not in the labour force who were not actively looking for work who answered 'yes' or 'maybe' when asked if they would like a job, as well as those people not in the labour force who were actively looking. It is assumed those people actively looking want a job.

FOR MORE INFORMATION . . .

INTERNET

www.abs.gov.au the ABS website is the best place for data from our publications and information about the ABS.

INFORMATION AND REFERRAL SERVICE

Our consultants can help you access the full range of information published by the ABS that is available free of charge from our website. Information tailored to your needs can also be requested as a 'user pays' service. Specialists are on hand to help you with analytical or methodological advice.

PHONE

1300 135 070

EMAIL

client.services@abs.gov.au

FAX

1300 135 211

POST

Client Services, ABS, GPO Box 796, Sydney NSW 2001

FREE ACCESS TO STATISTICS

All statistics on the ABS website can be downloaded free of charge.

WEB ADDRESS

www.abs.gov.au